

# PLAT AND RECORD

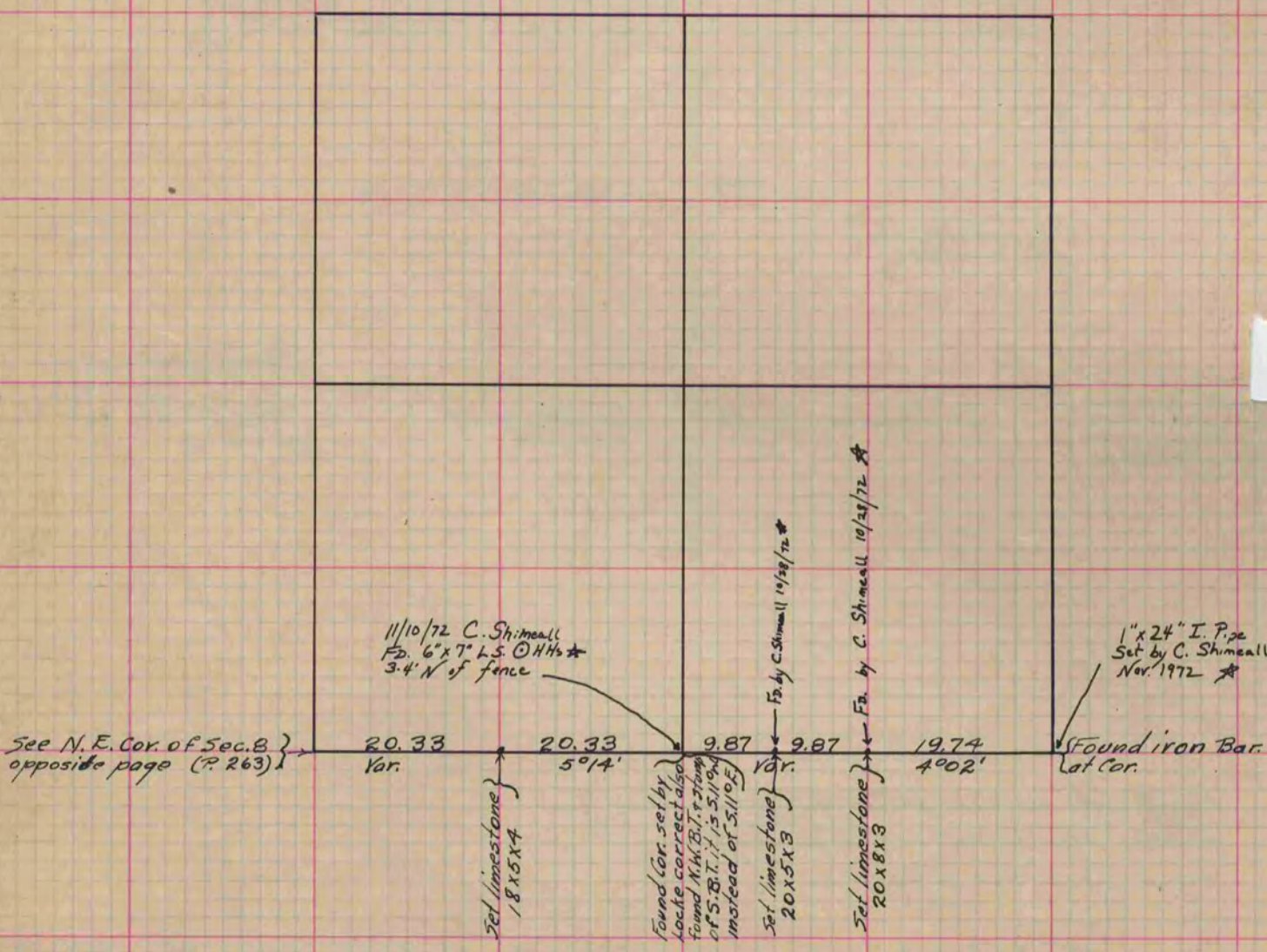
**MICROFILMED**

Of a Survey on Section 4 T 2 R 10 E. of the 4 P. M. in Spring Valley Township  
Rock County, Wisconsin, made May the 2<sup>nd</sup> 1879

I hereby certify that the following is a correct record of said survey as made by me.

COUNTY BUILDING  
CITY OF JANESVILLE

(Signed) Edward Ruger  
County Surveyor.



\* Copied from Beloit Records  
12/11/75 G. O.

Copied from Page 217 Vol. 2 Original County Surveyor's Record