

PLAT AND RECORD

ROCK COUNTY
MAY 21 1872

Of a Survey on Section 36 T 5 R 11 E. of the 4 P. M. in DUNKIRK Township

Rock County, Wisconsin, made MAY the 21, 22 19 1872

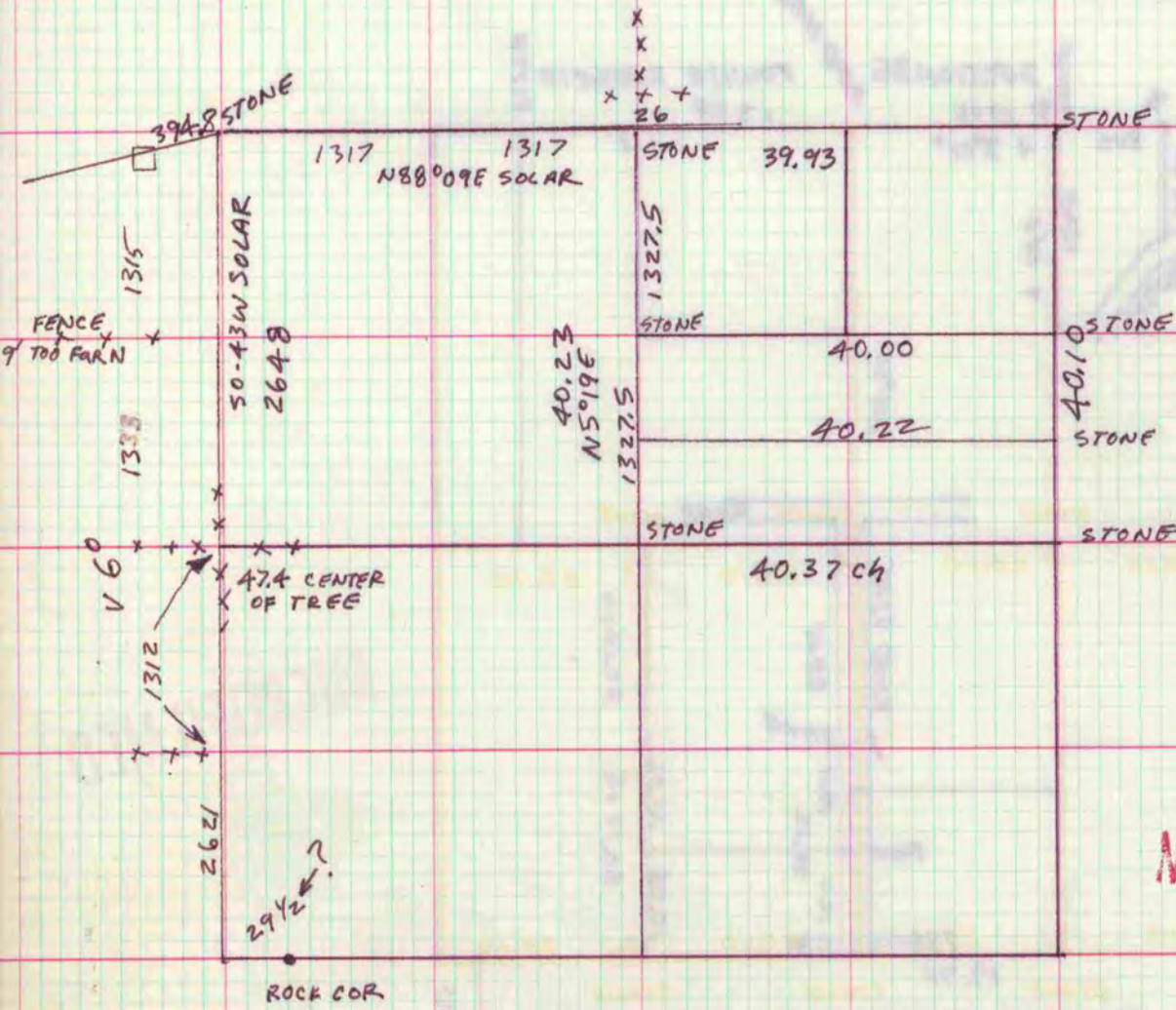
I hereby certify that the following is a correct record of said survey as made by me.

COUNTY BUILDING
CITY OF JANESVILLE

S.W. GRAVES COUNTY SURVEYOR DANE COUNTY
County Surveyor.

THE GEO. D. BARNARD COMPANY, ST. LOUIS

Copied FROM DANE COUNTY SURVEYOR'S RECORDS Book 6 pg 570 2/2/86
Don Barnes



MICROFILMED

SURVEYED ON THE ABOVE PLATTED SECTION 36, ON THE 21 & 22 DAY OF MAY 1872 COMMENSE AT THE NORTH QUARTER CORNER SET STONE IN CORNER RUN EAST TO NE CORNER STAKE GONE FOUND 1 STUMP THE OTHERS ARE IN THE ROADS: SET STONE FOR CORNER DIVIDED UP THE NE 1/4 AS PLATED AMONG THE SEVERAL OWNERS AND SET STONES AT ALL OF THE CORNERS I CERTIFY THE ABOVE TO BE CORRECT AS SURVEYED BY ME

S.W. GRAVES
COUNTY SURVEYOR

OCT 1885 ESTABLISHED THE SW COR ALTHOUGH WITH DIFFICULTY- COULD FIND ONLY ONE OF THE BEARING STUMPS BUT TRACED THE WEST LINE OF THE SECTION AND THINK THE CORNER IS CORRECT AS IT COMPARED ABOUT RIGHT WITH THE ROCK COUNTY CORNER BEARING AS FOLLOWED TO A STAKE WITH STONES AROUND IT BLK 0 10 in N17°E 85 1/2 L BLK 0 6. in N36°W86 L

JOHN DOUGLAS COUNTY SURVEYOR

JUNE 15-16 1918 A LONG DESCRIPTION OF A SURVEY THAT I CAN NOT READ. Don Barnes