

PLAT AND RECORD

113
VOL. 6

Of a Survey on Section 31 T. 2 R. 15 E. of the 4 P. M. in DARIEN Township
Rock County, Wisconsin, made JAN. the 8 1981

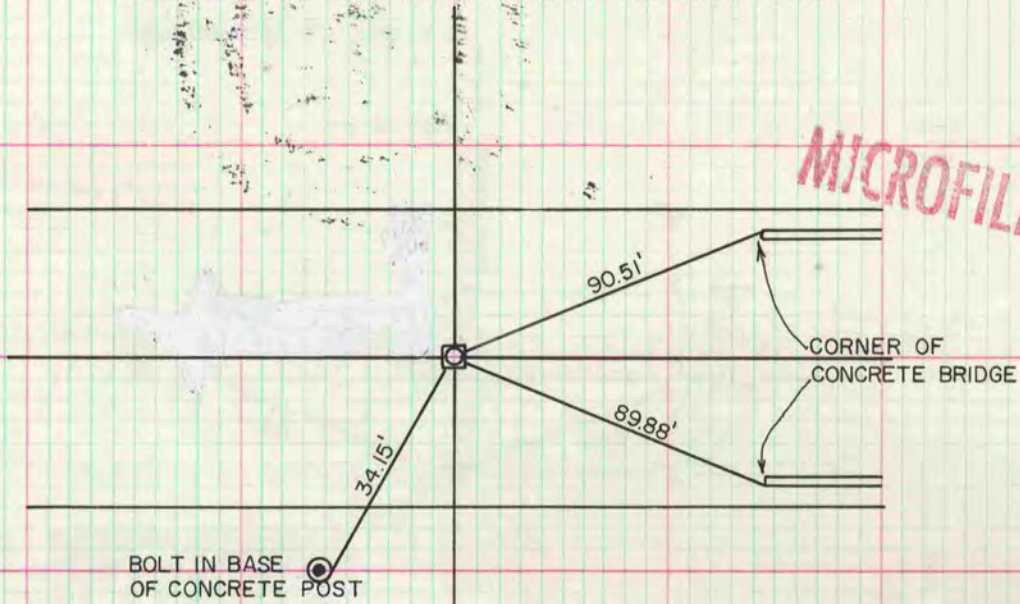
I hereby certify that the following is a correct record of said survey as made by me.

COUNTY BUILDING
CITY OF JANESVILLE

Donald Barnes
County Surveyor.

SW COR SEC 31

DATA SUPPLIED BY WALWORTH COUNTY SURVEYORS OFFICE

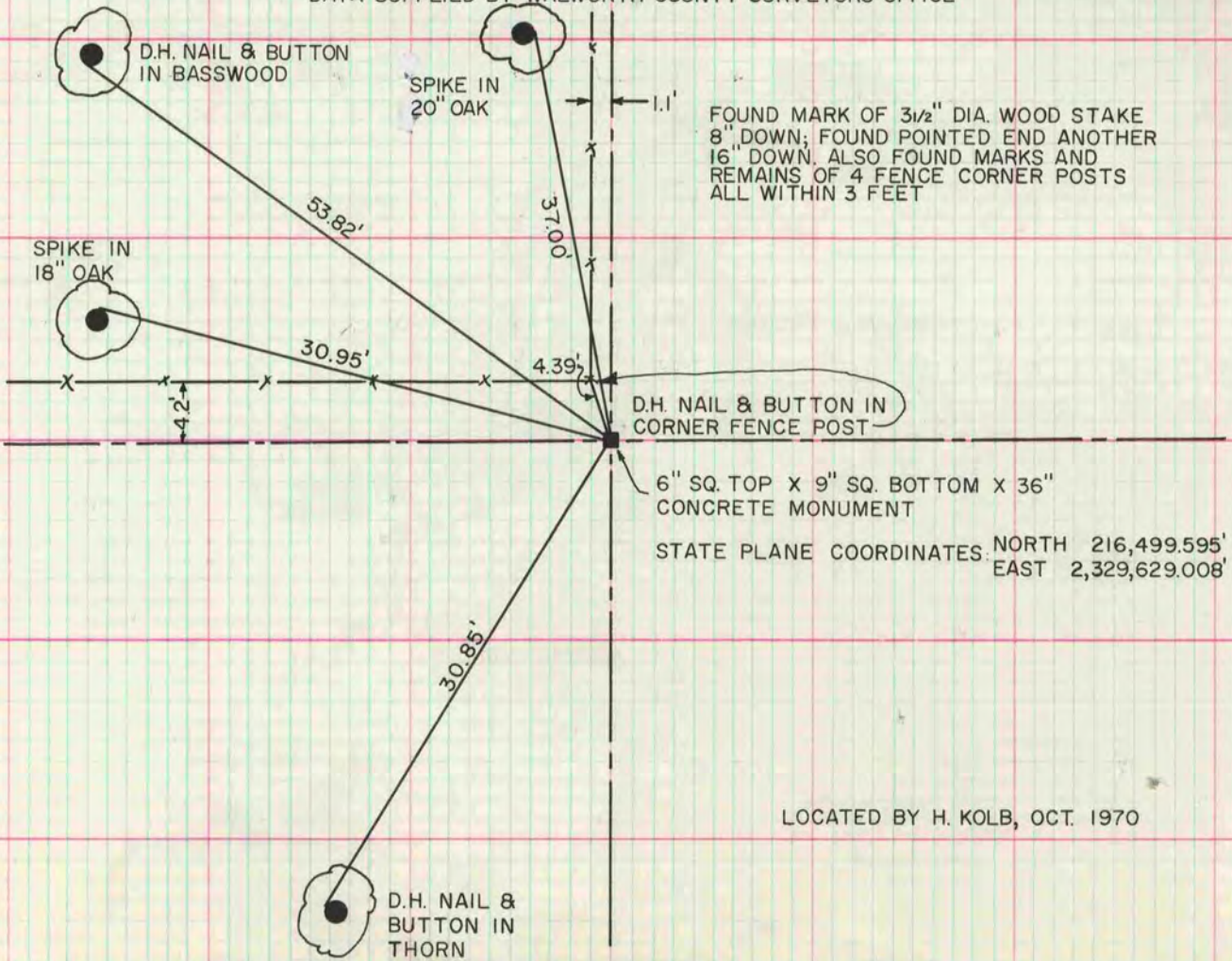


LOCATED BY H. KOLB, OCT. 1, 1970

FOUND A 5" SQ. TOP BY 30" CONCRETE MONUMENT SET BY L.L. JENSEN, WALWORTH COUNTY SURVEYOR.
SET A 6" SQ. TOP BY 9" SQ. BOTTOM BY 36" CONCRETE MONUMENT. STATE PLANE COORDINATES:
NORTH 213,857.367', EAST 2,329,677.636'

W1/4 COR SEC 31

DATA SUPPLIED BY WALWORTH COUNTY SURVEYORS OFFICE



LOCATED BY H. KOLB, OCT. 1970