

522 MICROFILMED
V-2

PLAT AND RECORD

COUNTY BUILDING
CITY OF JANESVILLE

Of a Survey on Section T R E. of the 4 P. M. in Township

Rock County, Wisconsin, made the 19

I hereby certify that the following is a correct record of said survey as made by me.

County Surveyor.

PLAT of S.E. 1/4 of Sec. 4 TURTLE.

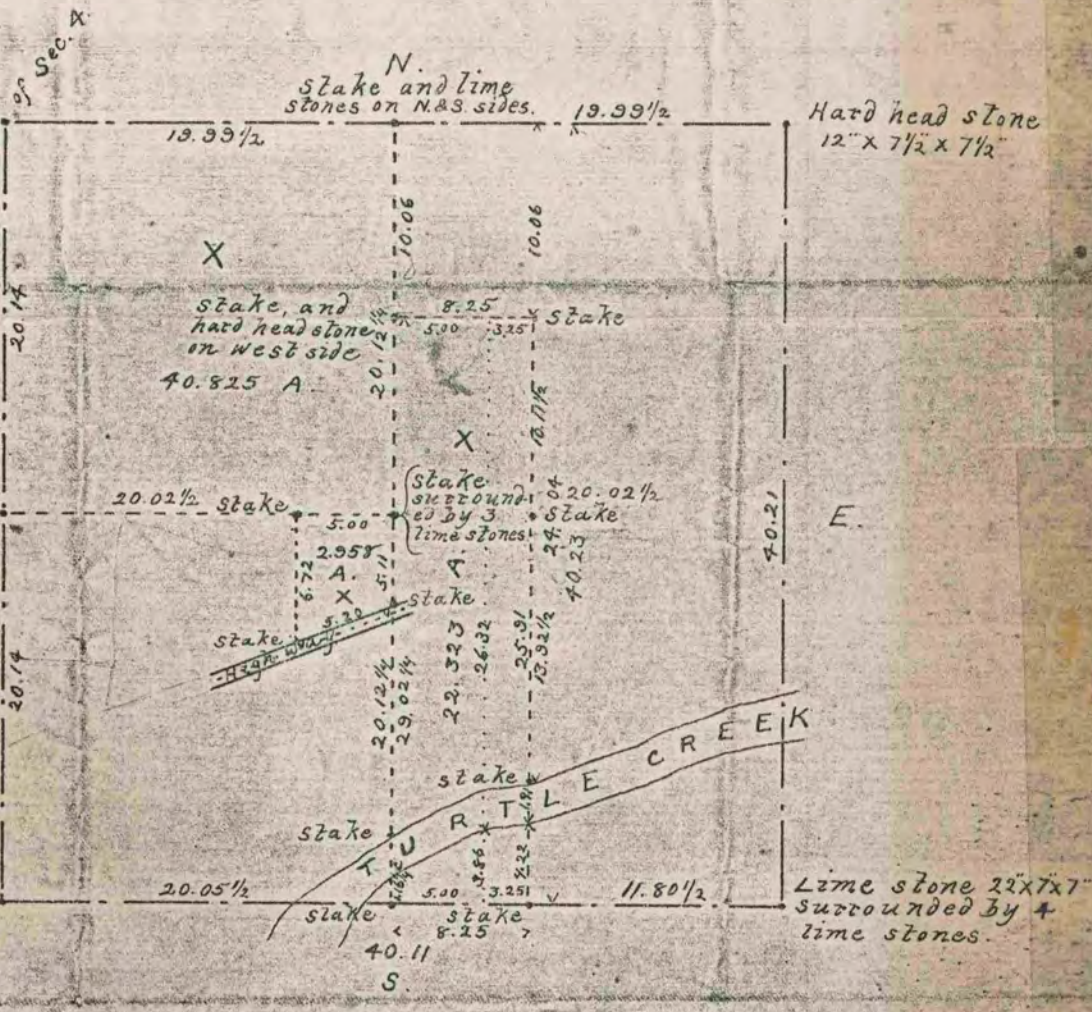
See Vol 5, Pg. —

Gun barrel sur-
rounded by 3 lime
stones and 1 burnt
hard head.

Set C.I. Mon
IN PLACE OF
GUN BARREL

W. Lime stone 13 1/2 x
6 1/2 x 4" surround-
ed by 4 lime stones

Red Cedar stake,
lime stone on top
of stake, and lime
stone on top of
lime stone.



66.106 Acres in the three pieces marked with crosses.

The survey embraced said section 4,
All of the corners established in the U.S. survey of said section
were found; and said section was subdivided into quarters as
required by law; and then the S.E. 1/4 of said section was sub-
divided as shown on the plat.

Edward Ruzer C. S.