

V-2 MICROFILMED

PLAT AND RECORD

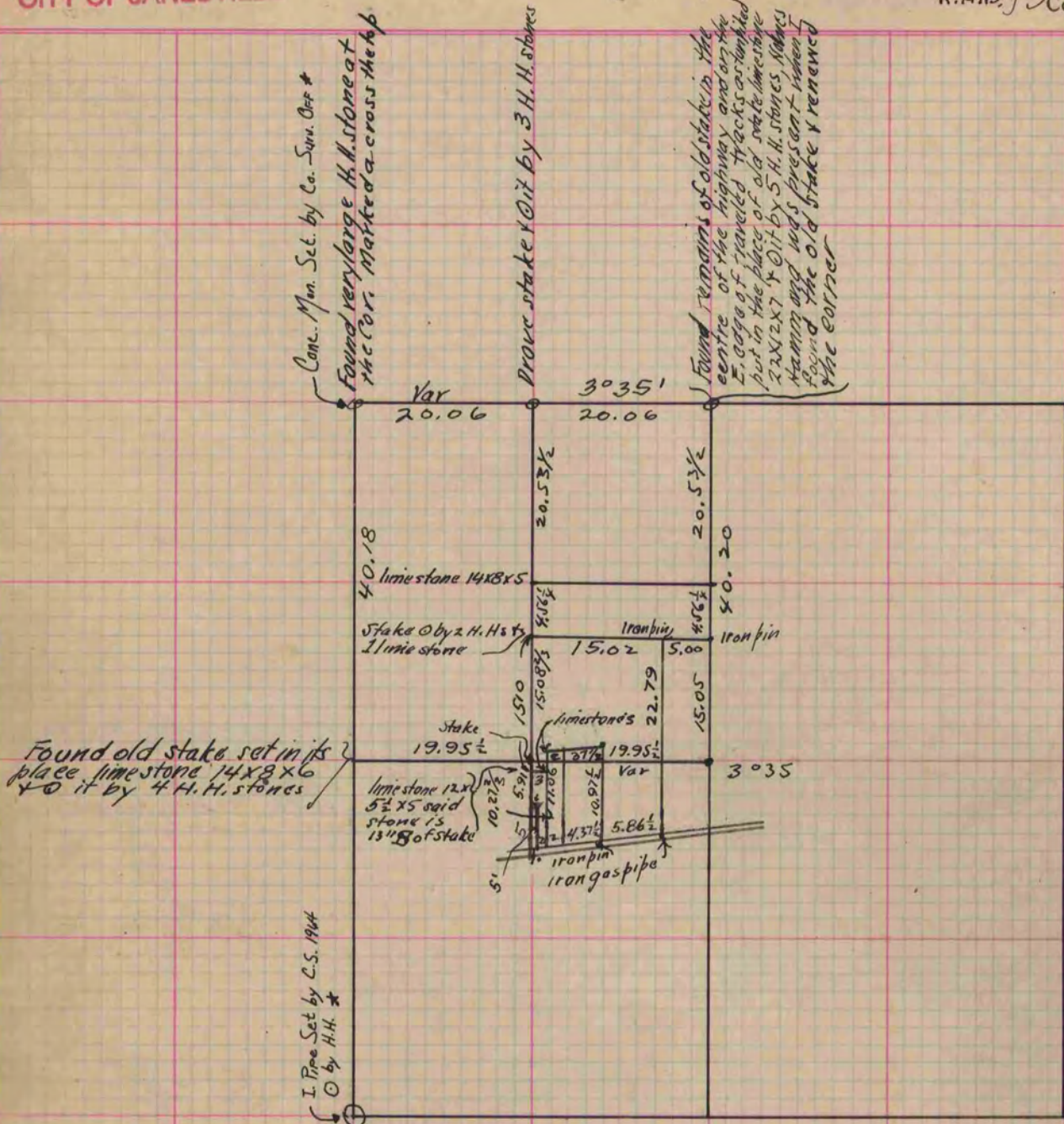
Of a Survey on Section B T 1 R 14 E. of the 4 P. M. in Clinton Township

Rock County, Wisconsin, made May the 12th 1877

I hereby certify that the following is a correct record of said survey as made by me.

COUNTY BUILDING
CITY OF JANESVILLE

(Signed) Edward Roger
R.H.B. County Surveyor.



Copied from page 178 Vol. 2. County Surveyors Record

* Copied from Beloit Records
12/1/75
G.O.