

PLAT AND RECORD VOL. 5 323

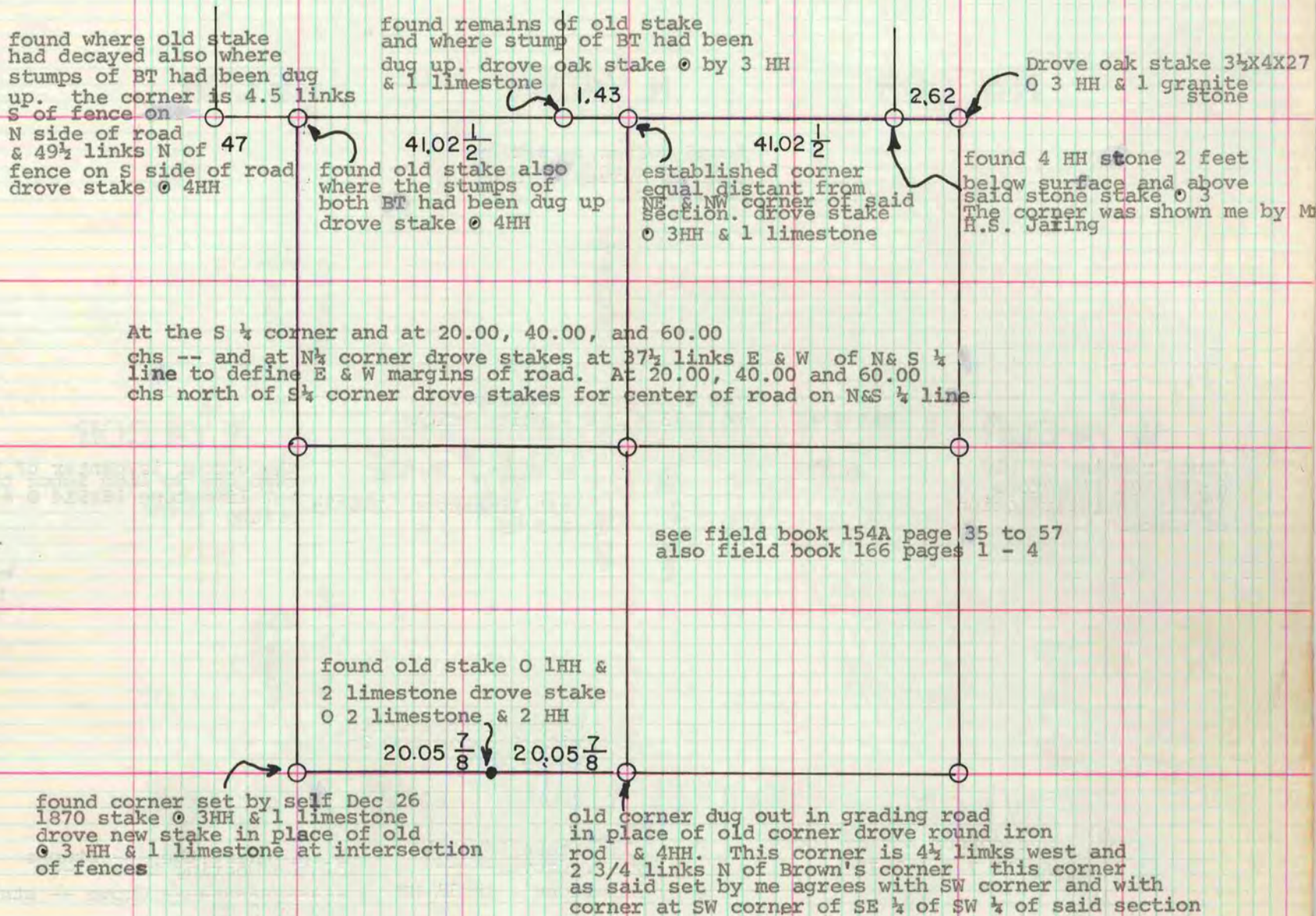
Of a Survey on Section 3 T. R. E. of the 4 P. M. in JOHNSTOWN Township
 Rock County, Wisconsin, made JUNE the 27 1906

I hereby certify that the following is a correct record of said survey as made by me.

COUNTY BUILDING
CITY OF JANESVILLE

EDWARD RUGER

County Surveyor.



The above is a record and plat of a survey made by me on section 3 Johnstown and of a 3 rod wide highway along the N & S 1/4 line of said section June 27 to 29 inclusive 1906.

The above survey was copied from county surveyor's records 1859 - 1906 page 569 -- indicates word or words were not legible. in back of book

DONALD BARNES

Donald Barnes

MICROFILMED