

PLAT AND RECORD

V-3 285

PG 230

MICROFILMED

Of a Survey on Section 34 35 T. 3 N. R. 11 E. Center
243 T. 2 N. R. 11 E. of the 4 P. M. in Plymouth

BELOIT REC 12/15/75
DAB Township

Rock County, Wisconsin, made May, Aug. Oct. the _____ 1933.

I hereby certify that the following is a correct record of said survey as made by me.

COUNTY BUILDING
CITY OF JANESVILLE

B. J. Sweeney
County Surveyor.

WORK SHOWN IN RED
DONE BY R. H. BATTERMAN JR.
APRIL 21, 1958
1" PIPES SET AT REFERENCE PTS.

35

34

Center Twp.

State Highway #20

Plymouth Twp.

* C.S. SET 1" PIPE
3/25/72

* COPIED FROM BELOIT
REC 12/15/75 PAS.

40 links = 26.4' Offset

20 links = 13.2' Offset

link = 0.66' offset

5 links = 3.3' Offset

{ Set 1"x36" iron pipe
in Conc. Pavment
1.7' N. of E. of same

{ Set 1"x36" pipe
in Conc. Pavment
0.4' N. of same

{ Set 1"x36" pipe
in Conc. Pavment
80.5' of E. of same

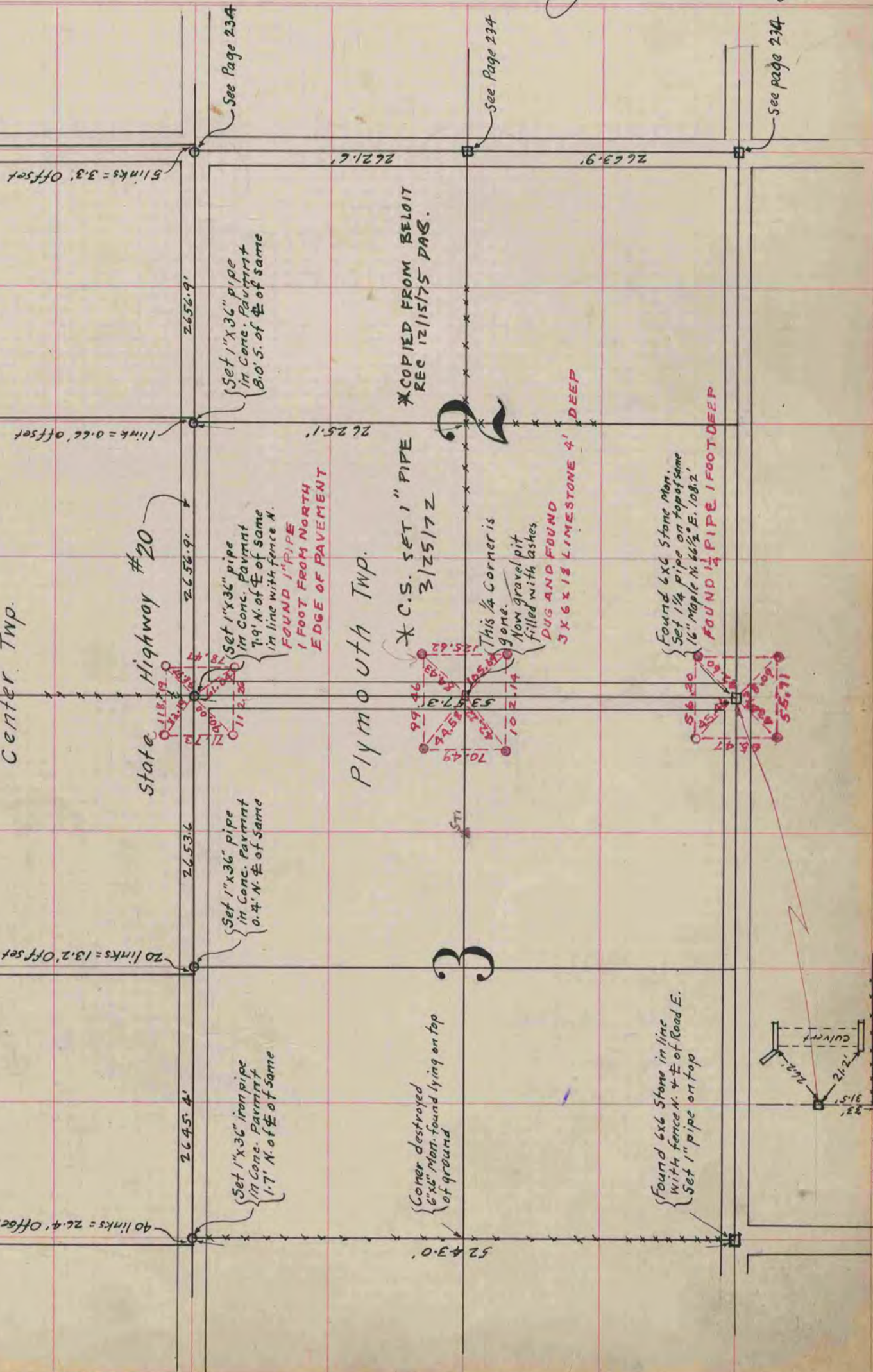
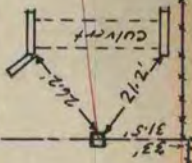
{ Set 1"x36" pipe
in line with fence N.
FOUND 1" PIPE
1 FOOT FROM NORTH
EDGE OF PAVEMENT

{ Corner destroyed
6"x6" Man. found lying on top
of ground

{ Found 6x6 Stone in line
with fence N. & E. of Road E.
Set 1" pipe on top

This 1/4 Corner is
Now gravel pit
filled with ashes
DUG AND FOUND
3 X 6 X 18 LIMESTONE 4' DEEP

{ Found 6x6 Stone Man.
Set 1 1/4" pipe on top of same
16" Maple N. 66 1/2° E. 108.2'
FOUND 1 1/4" PIPE 1 FOOT DEEP



See Page 234

See Page 234

See page 234