

MICROFILMED

PLAT AND RECORD

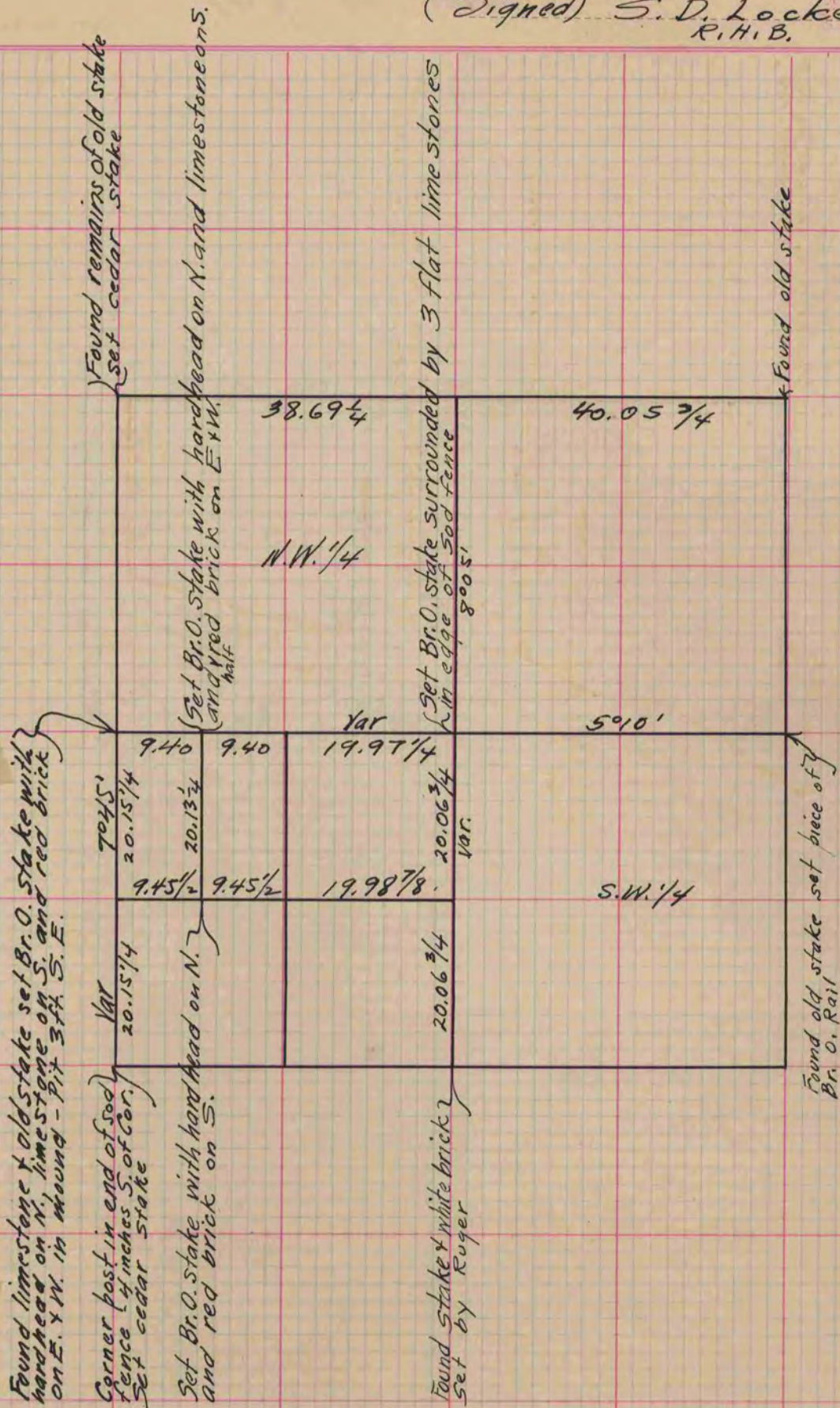
313  
V-1

COUNTY BUILDING  
CITY OF JANESVILLE

Of a Survey on Section 19 T 3 R 13 E. of the 4 P. M. in Harmony Township  
Rock County, Wisconsin, made March the 17th 1868

I hereby certify that the following is a correct record of said survey as made by me.

(Signed) S. D. Locke  
R. H. B. County Surveyor.



Copied from Page 262 Vol. 1. Original County Surveyors Record