

PLAT AND RECORD

COUNTY OF JANEZ
CITY OF JANESVILLE

Of a Survey on Section 26 T 4 N R 10 E. of the 4 P. M. in UNION Township

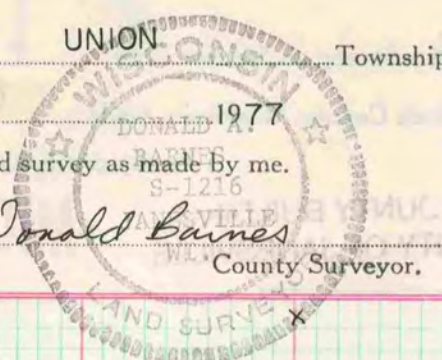
Rock County, Wisconsin, made JAN the 4

UNION

1977

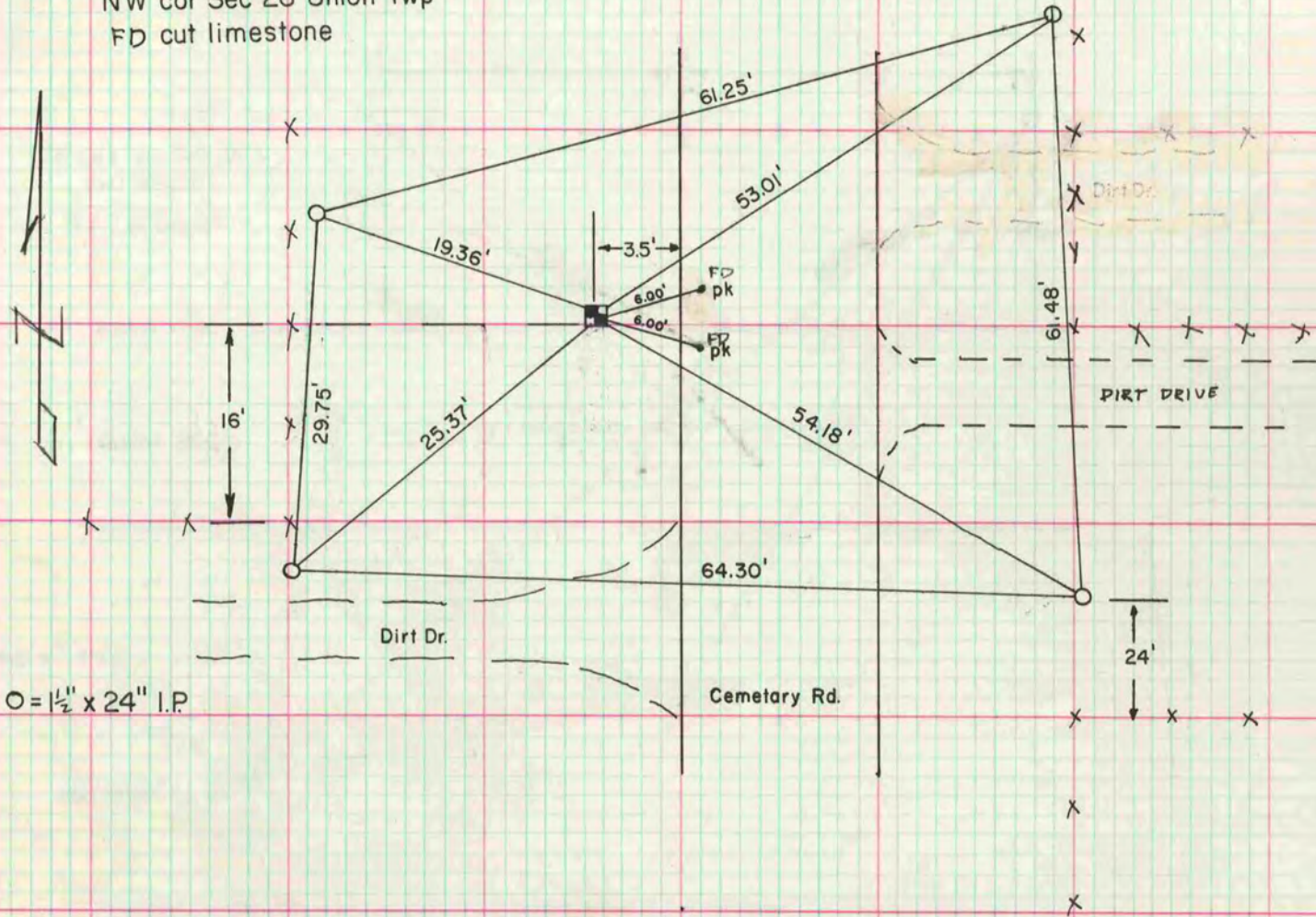
I hereby certify that the following is a correct record of said survey as made by me.

Donald Barnes
County Surveyor.



MICROFILMED

NW cor Sec 26 Union Twp
FD cut limestone



O = 1/2" x 24" I.P.