

PLAT AND RECORD

COUNTY BUILDING
CITY OF JANESVILLE

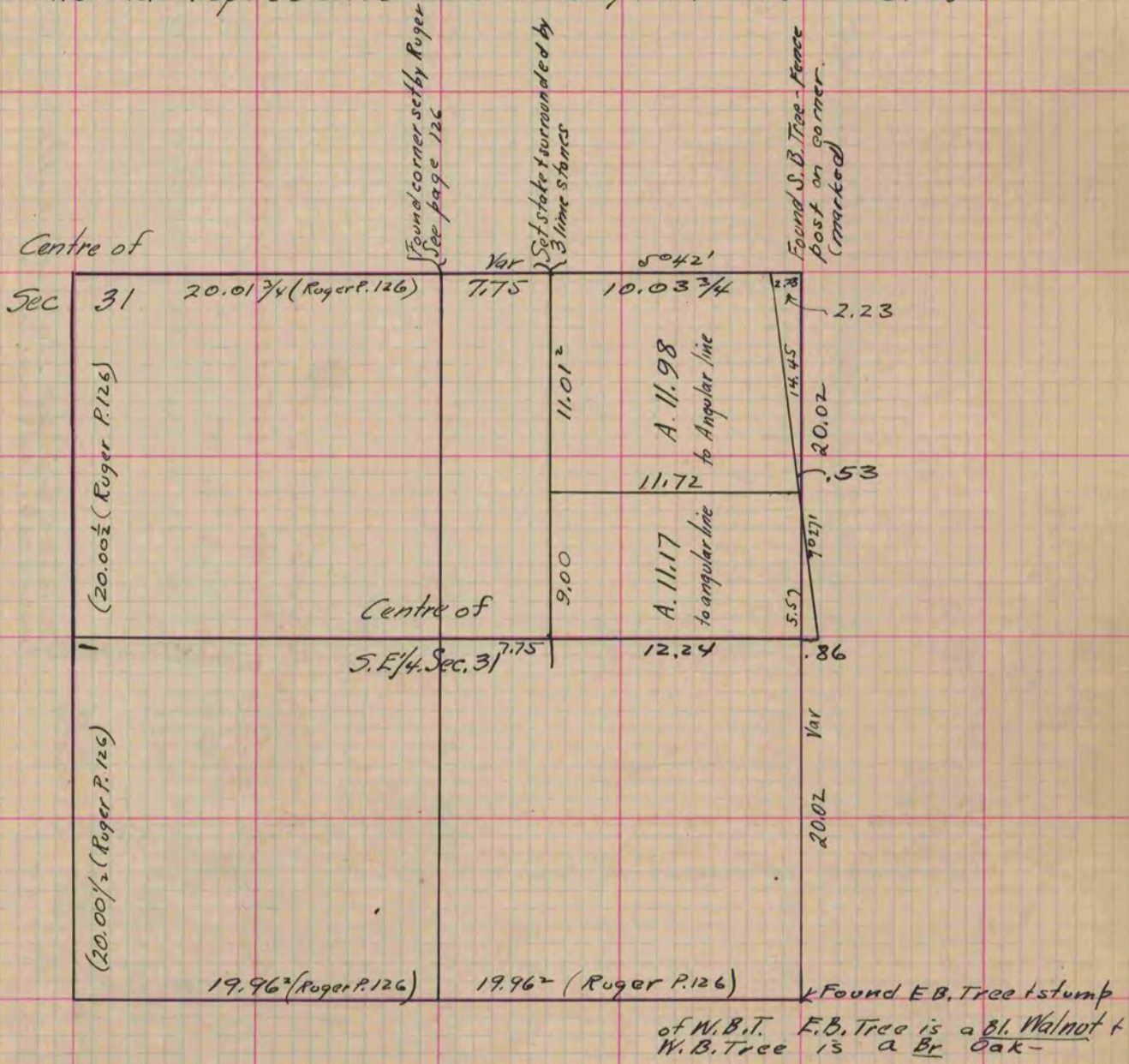
MICROFILMED

Of a Survey on Section 31 T 3 R 13 E. of the 4 P. M. in Harmony Township
Rock County, Wisconsin, made December the 6th 1865

I hereby certify that the following is a correct record of said survey as made by me.

(Signed) S. D. Locke
R.H.B. County Surveyor.

The Plat represents the S.E. 1/4 of the Section



Note — Page 117 this book contains record of Page 126 mentioned above.
R.H.B.

Copied from Page 225 Vol. 1. Original County Surveyors Record