

MICROFILMED

PLAT AND RECORD

COUNTY BUILDING
CITY OF JANESVILLE

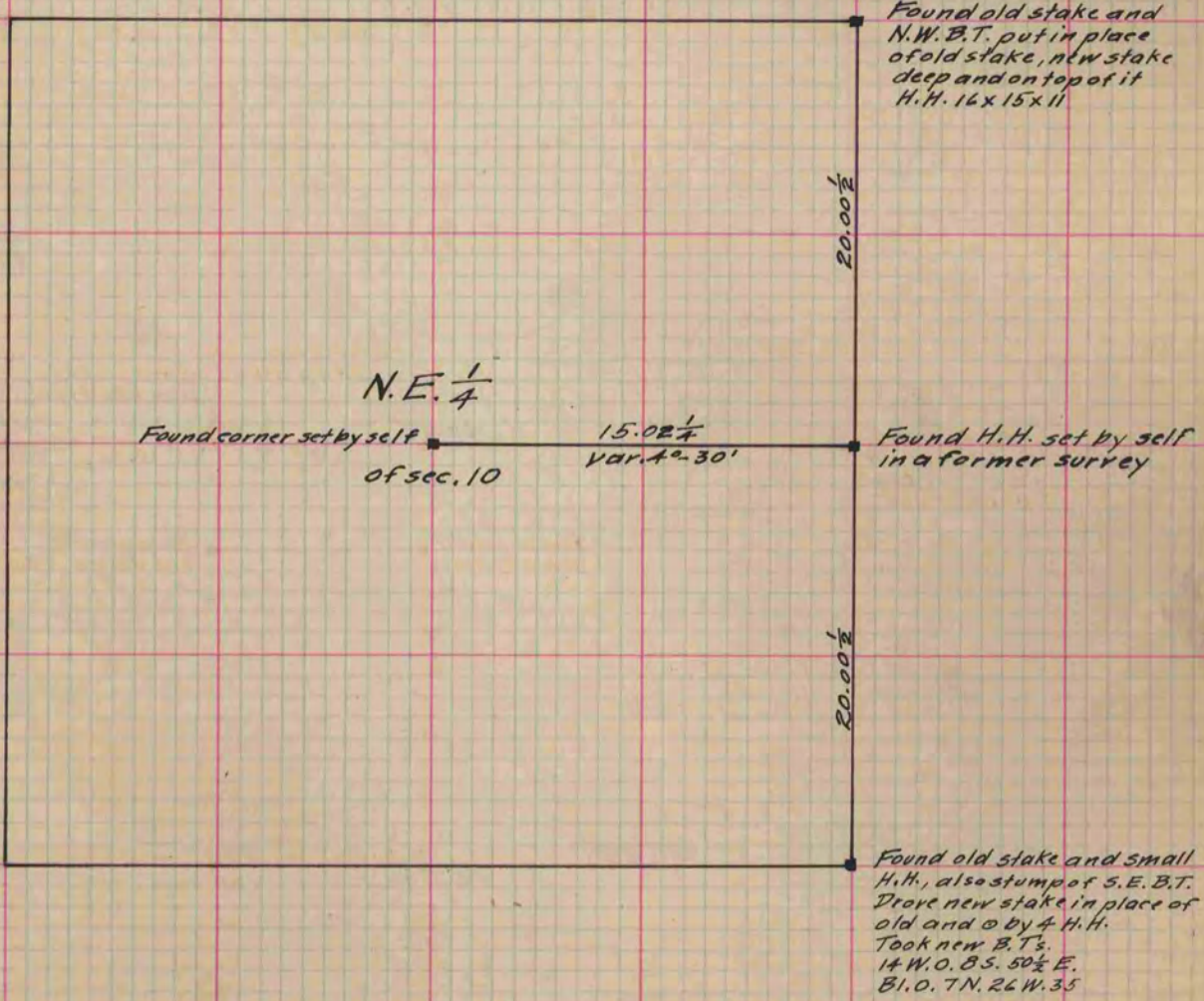
Of a Survey on Section $N\frac{1}{4}$ 10 T 3 R 12 E. of the 4 P. M. in Janesville Township

Rock County, Wisconsin, made Nov. the 26. th 1887

I hereby certify that the following is a correct record of said survey as made by me.

(Signed) Edward Ruger

County Surveyor.



See page 15

Copied from P. 337 Vol. 2 County Surveyors Record.