

# PLAT AND RECORD

235

Of a Survey on Section 6 T 1 R 13 E. of the 4 P. M. in Turtle Township

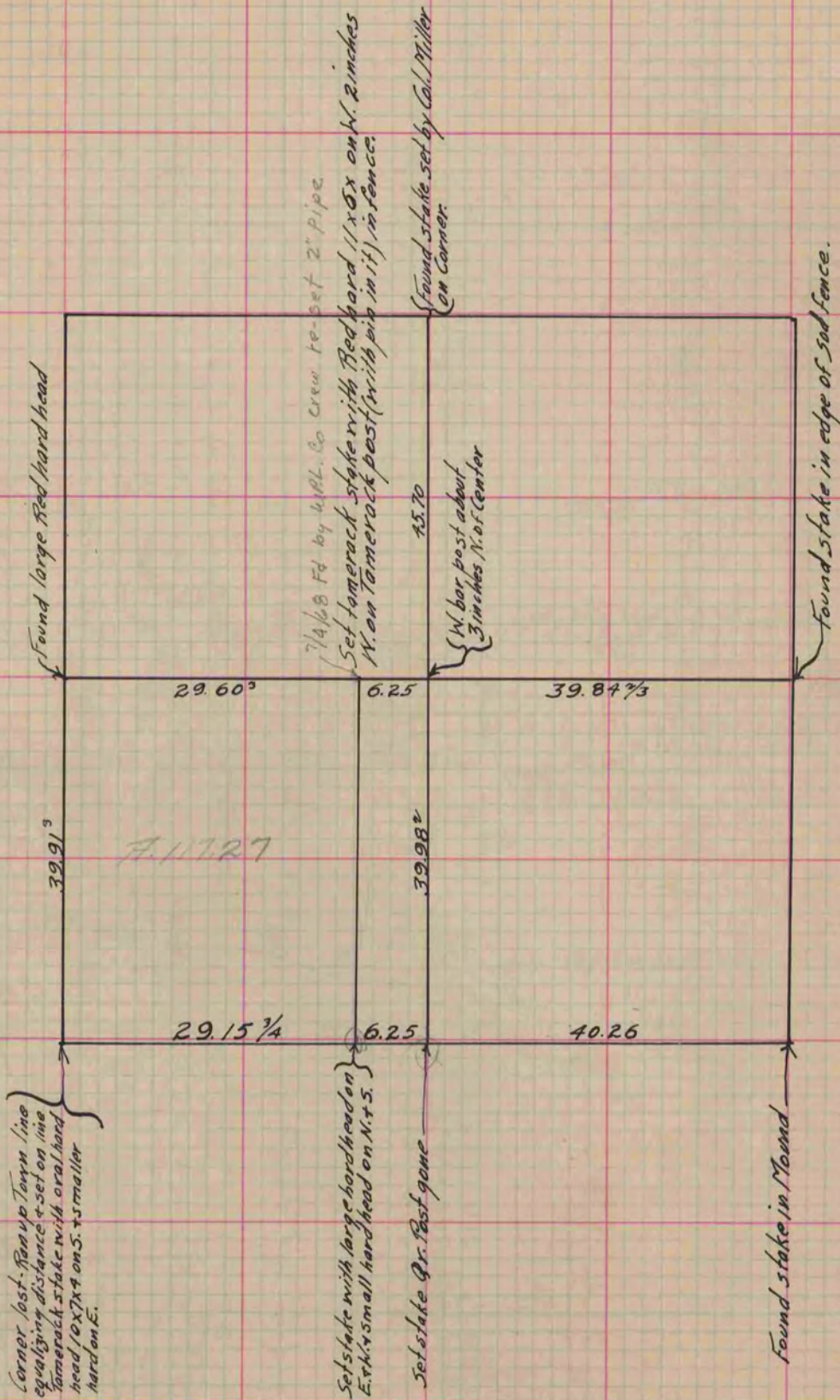
Rock County, Wisconsin, made May the 15 1865

I hereby certify that the following is a correct record of said survey as made by me.

COUNTY BUILDING  
IN CITY OF BELOIT

(Signed) S.D. Locke  
*S.D. Locke*

County Surveyor.



Copied from Page 218 Vol. 1. Original County Surveyor's Record.