

PLAT AND RECORD

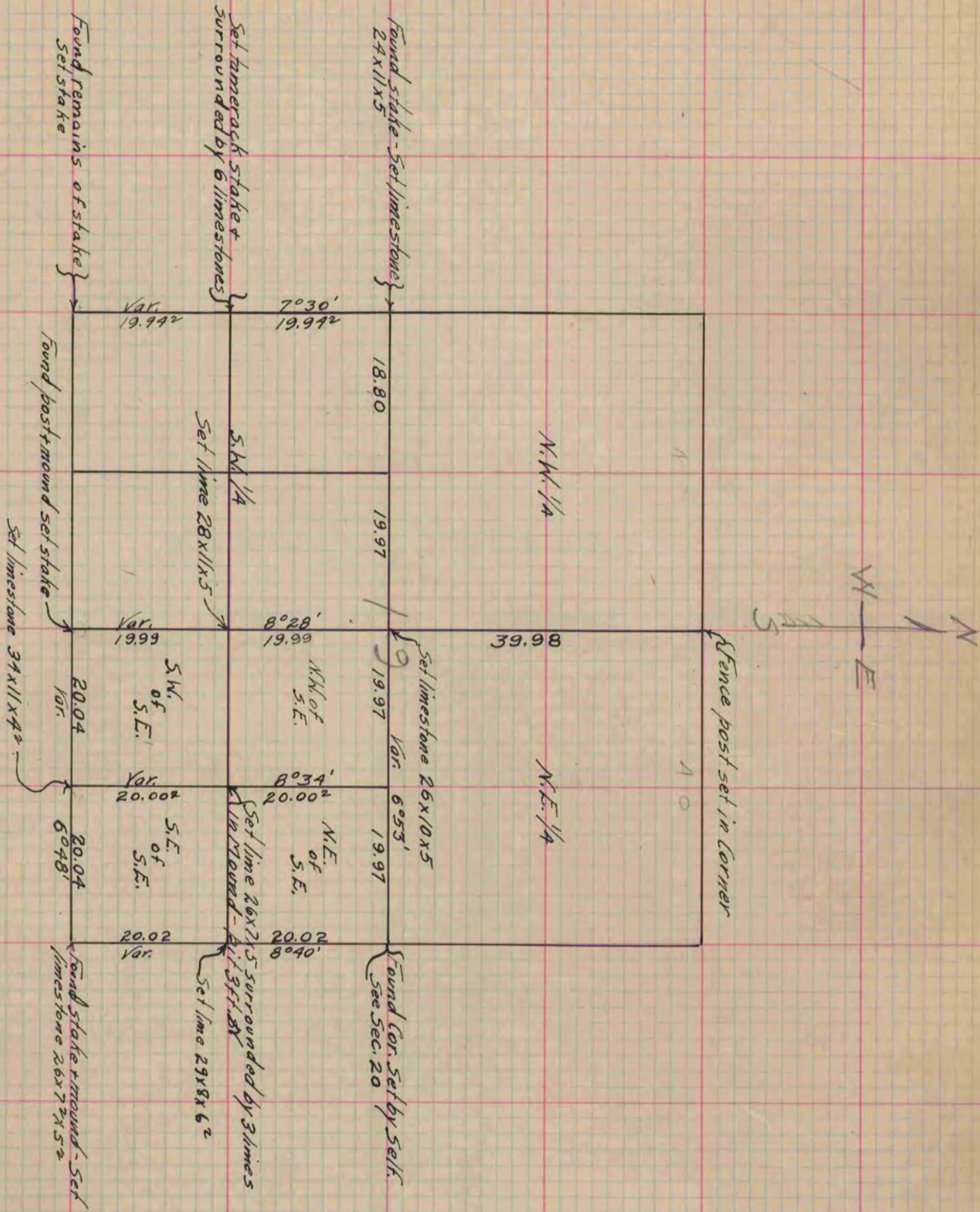
Of a Survey on Section 19 T 2 R 13 E. of the 4 P. M. in La Prairie Township
Rock County, Wisconsin, made May the 12th 1866

I hereby certify that the following is a correct record of said survey as made by me.

COUNTY BUILDING
IN CITY OF BELOIT

(Signed) S. D. Locke
RLH

County Surveyor.



Copied from lower 1/2 of Page 229 Vol. 1. Original County Surveyor's Record.