

# PLAT AND RECORD

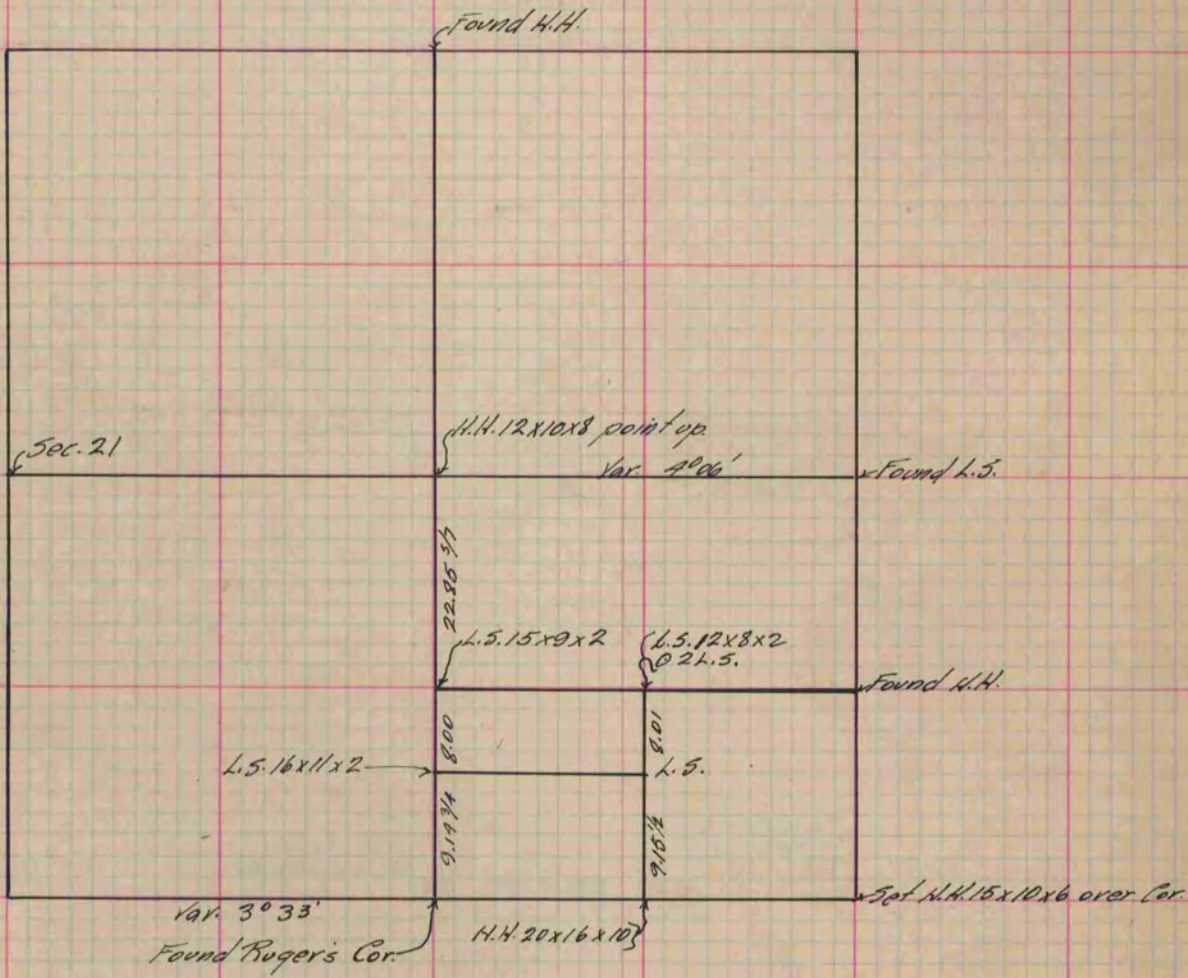
Of a Survey on Section 22 T 2 R 14 E. of the 4 P. M. in Bradford Township  
Rock County, Wisconsin, made the \_\_\_\_\_ 19\_\_\_\_

I hereby certify that the following is a correct record of said survey as made by me.

COUNTY BUILDING  
IN CITY OF BELOIT

(Signed) P.F. Brown  
PMB

County Surveyor.



Copied from P. 383 Vol. 2 County Surveyor's Record.