

PLAT AND RECORD

Of a Survey on Section Pt 35 T 1 R 12 E. of the 4 P. M. in Beloit Township
 Rock County, Wisconsin, made the _____ 19____

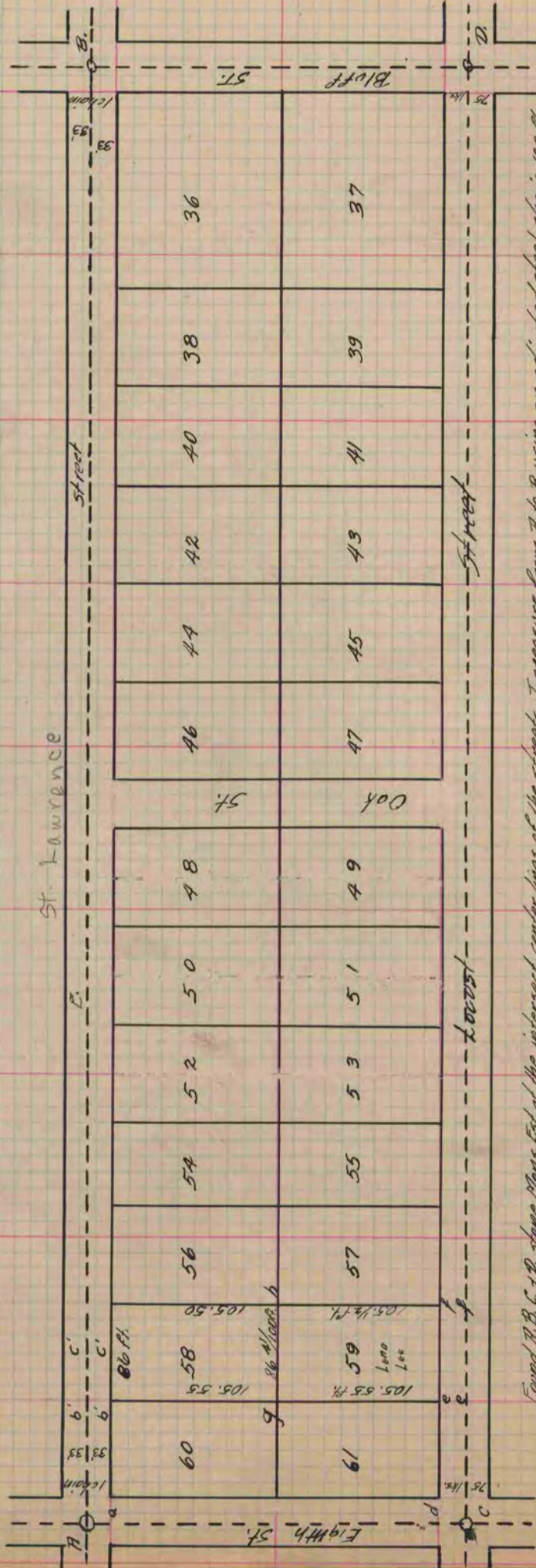
I hereby certify that the following is a correct record of said survey as made by me.

COUNTY BUILDING
 IN CITY OF БЕЛОИТ

County Surveyor.

Below is a record of a survey made by me Jan. 16 - 1880 of Lot No 59 in Tenney's Addn. to the City of Beloit
 At the N.W. Cor. of said lot, I drove a piece of $\frac{1}{16}$ " iron 30" long & 4" below surface placed on top of iron a limestone $8 \times 5 \frac{1}{2} \times 4 \frac{3}{4}$ "
 At N.E. Cor. I drove a piece of $\frac{3}{16}$ " iron 18" long, with a limestone 6" thick & $6 \frac{1}{2} \times 8 \frac{1}{2}$ " on top upon it. At S.E. Cor. I drove $\frac{7}{16}$ " iron $40 \frac{1}{4}$ " long
 with limestone set at end of S. side of stone is $9 \times 5 \times 4$ ". At S.W. Cor. I drove $\frac{7}{16}$ " iron $28 \frac{1}{2}$ " long with limestone $12 \times 6 \times 4 \frac{1}{2}$ " on top upon it.

(Signed) R. K. Lee
 Deput. Co. Surveyor



Found A, B, C, & D, stone Mon. Est. of the intersect center lines of the streets. I measure from A to B using an adjusted steel chain 100 ft. in length, & find distance to be 1293 $\frac{7}{10}$ ft. the recorded distance being 1290 $\frac{9}{10}$ ft. making an excess on this line of 2.9 ft. I measure from C to D, & find the dist. to be 1301.5 ft., the recorded distance being 1287 ft., & having an excess on this line of 14.5 ft. I measure from A to C, & find the recorded distance to be correct being 269 $\frac{95}{100}$ ft. I next find point marked "a" in C of 8th St. & 33 ft. S. from A. Also "b" in line A, B. at distance of 112.07 ft. from Mon at R, make C. in same line 86' dist. from B. I next find C. in line C, & D. & make dist. C' C' = 116.8 ft. I then fix point "f" in same line 86.8' from C. From the point b to c is 33 ft. & from the point c to f the dist. to c is 243 ft. G is the point est. by my survey as the N.W. Cor. of lot 59 is equidistant from b to c being 105.55 from each. h is the point est. by my survey as the N.E. Cor. of lot 59 is equidistant from C, & f. being 105.5 ft. from each c, f. are the S.W. & S.E. Cor. respectively of lot 59

Copied from P. 255 Vol. 2 County Surveyor's Record