

# PLAT AND RECORD

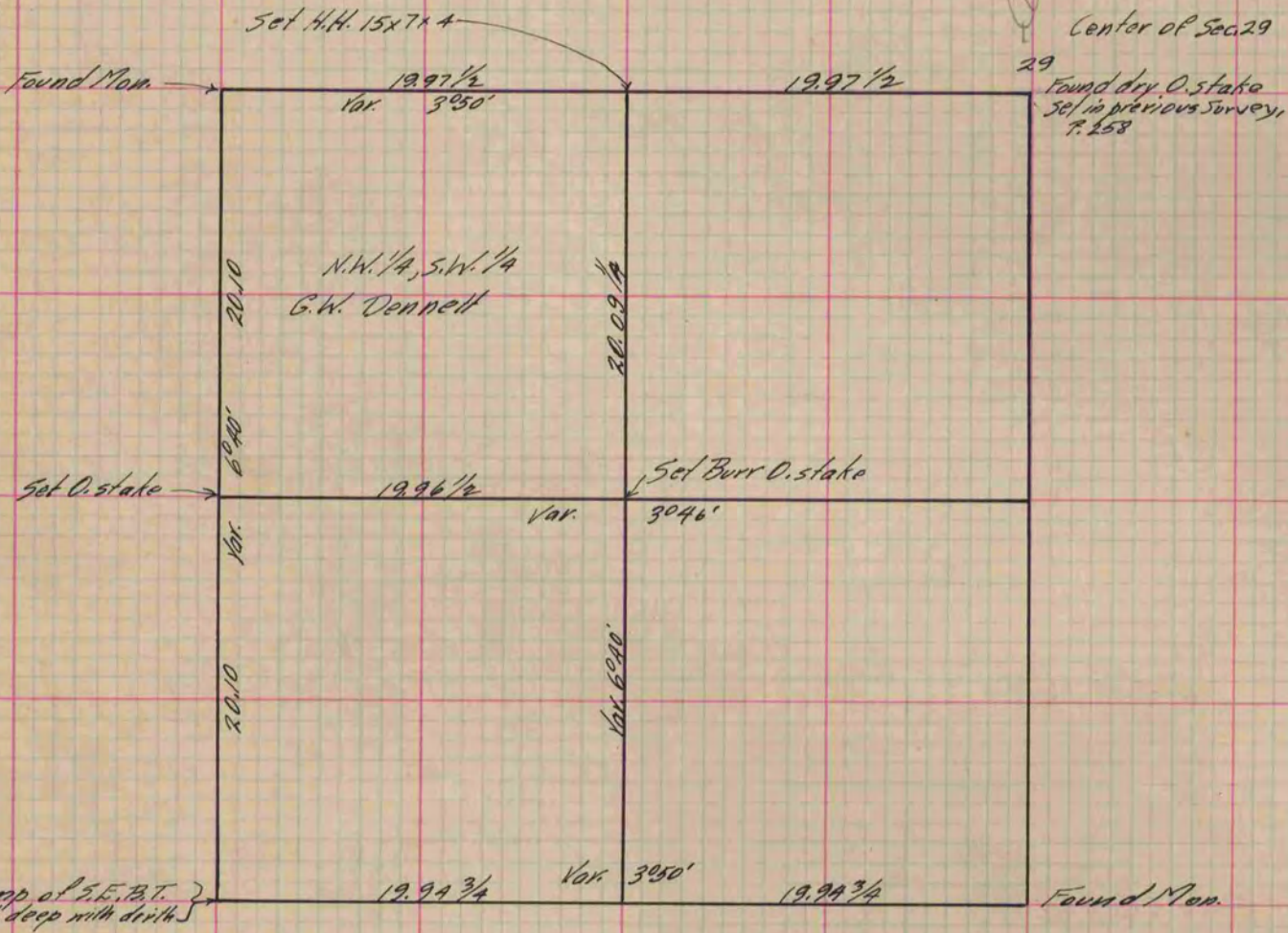
Of a Survey on Section <sup>SW 1/4 of</sup> 29 T 4 R 13 E. of the 4 P. M. in Milton Township  
 Rock County, Wisconsin, made September the 30<sup>th</sup> 1880

I hereby certify that the following is a correct record of said survey as made by me.

COUNTY BUILDING  
 IN CITY OF БЕЛОIT

(Signed) R. K. Lee  
 R. K. L.

Depl.  
 County Surveyor.



Copied from P. 260 Vol. 2 County Surveyor's Record.