

Village of Monroe

Of a Survey on Section _____ T _____ R _____ E. of the 4 P. M. in _____ Township

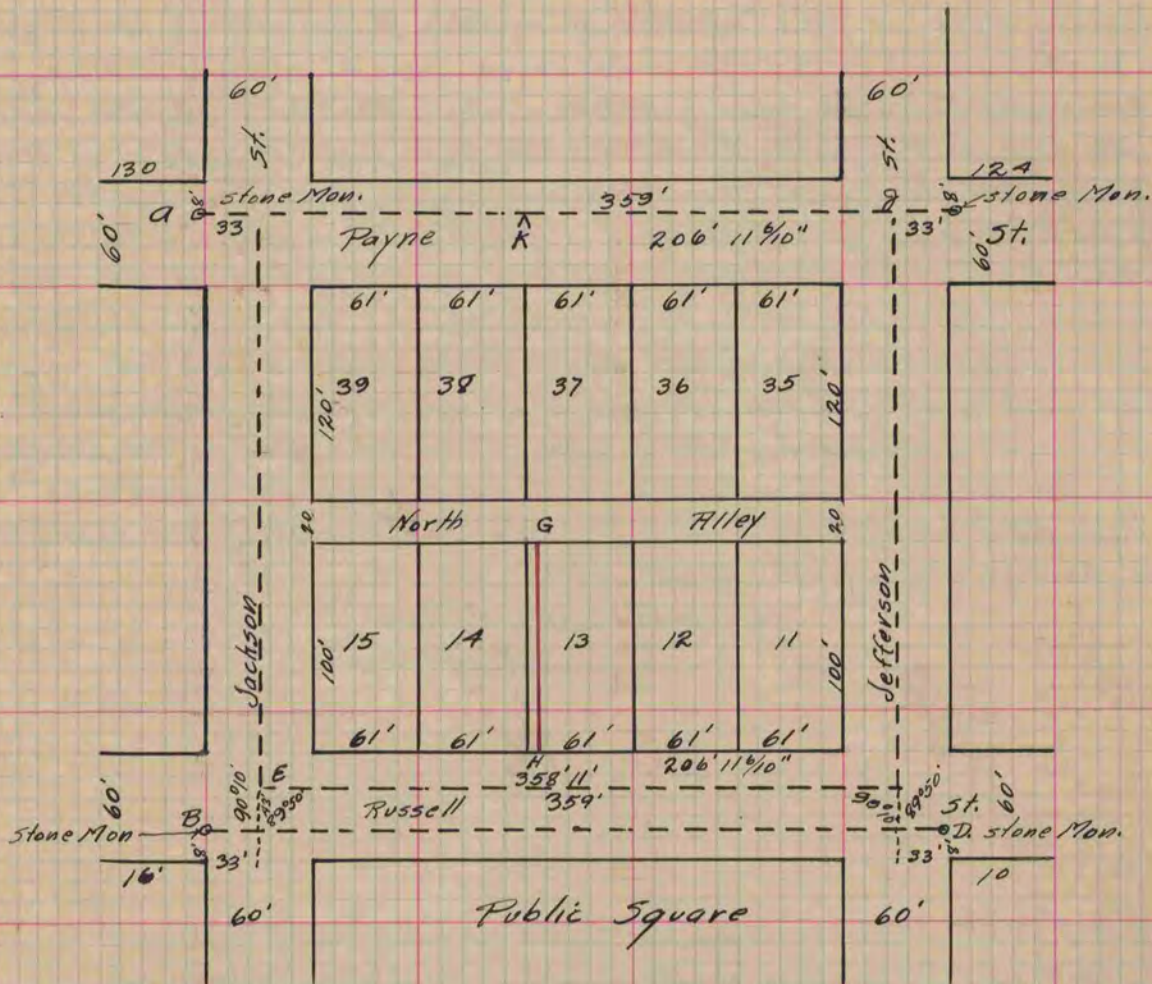
Greene
Rock County, Wisconsin, made *Jan. 30th 1874* & the *3rd of March* 1875

I hereby certify that the following is a correct record of said survey as made by me.

**COUNTY BUILDING
IN CITY OF БЕЛОIT**

(Signed) Edward Ruger
E. RUGER

County Surveyor.



The above is a record & plat of a Survey on the E. line of M. C. Smith & S. M. Bostwicks land in the Village of Monroe in Greene County, Wisconsin said land being the E. part of Lot 14 & a strip 3 ft. wide off the W. side of Lot 13 in Ly Brand's Donation to Green County. The stone monuments indicated on the plat were used as the basis for the Survey, drill holes in the tops of said stones determined the precise points. Jackson & Jefferson Sts. are not at right angles to Payne & Russell Sts. into 10 minutes as marked out & located on the ground. But they are parallel to each other as indicated on the plat. Offsetted 33 ft. E. from the monuments designated A. & B. & drew a right line between the points thus determined, Offsetted 33 ft. W. from the monuments designated C. & D. and drew a right line between points thus determined. Then on the right line so determined measured 43 ft. N. from a right line drawn between monuments B. & D. & drew a line parallel to it. These several lines are indicated by dotted lines on the plat. Then measured on a right line between the points E. & F. & found the distance to be 358 ft. & 11 inches, one inch —

Continued on Page 124.

Copied from Page 81 Vol. 2 Original County Surveyor's Record.