

PLAT AND RECORD

Of a Survey on Section 2 T 3 R 11 E. of the 4 P. M. in Center Township

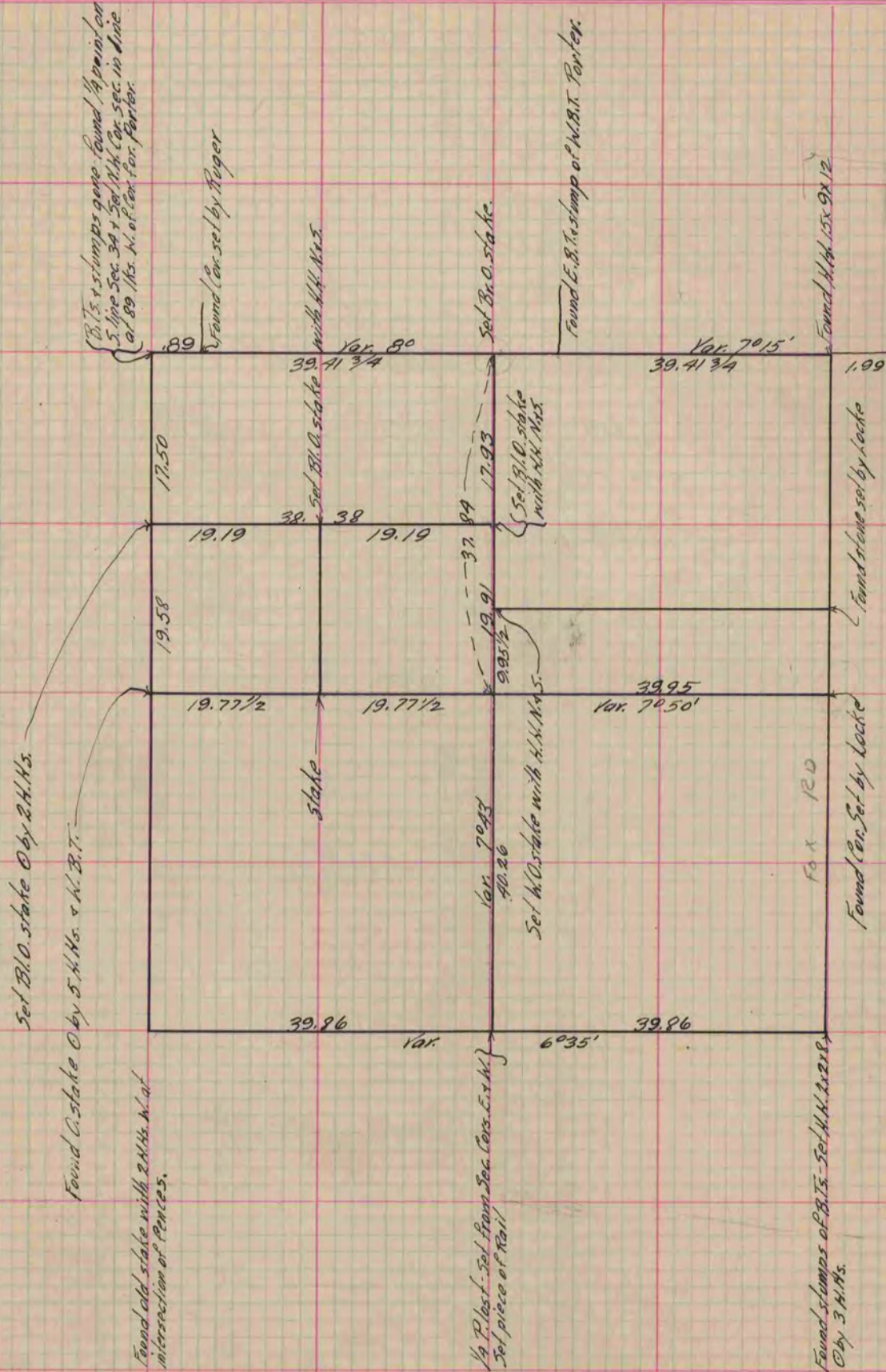
Rock County, Wisconsin, made October the 8th & 10th 1869

I hereby certify that the following is a correct record of said survey as made by me.

COUNTY BUILDING
IN CITY OF БЕЛОIT

(Signed) R. K. Lee
RKL

Dep. County Surveyor.



Copied from P. 285 Vol. 1 County Surveyor's Record.