

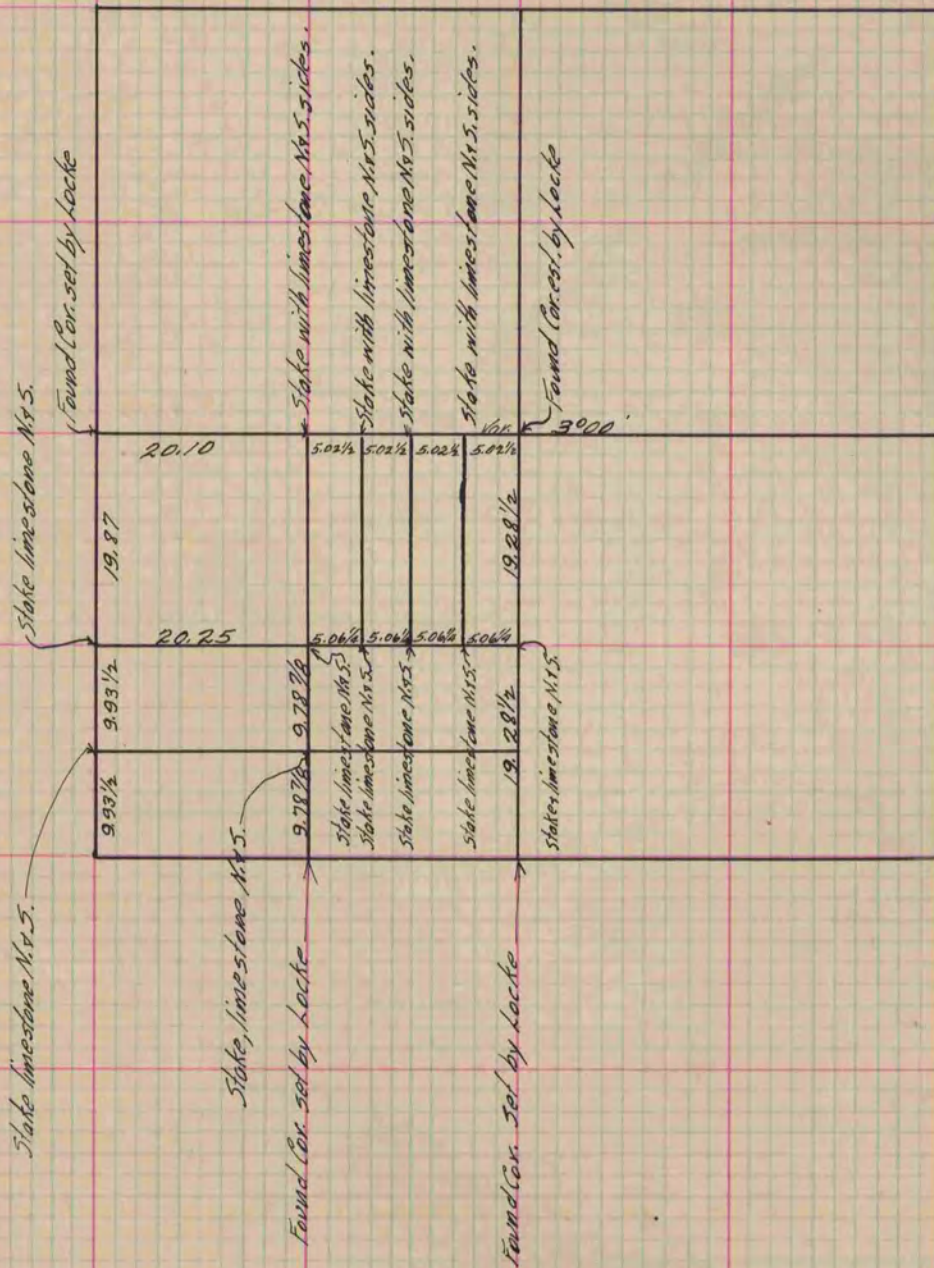
PLAT AND RECORD

Of a Survey on Section 1 T 2 R 10 E. of the 4 P. M. in Spring Valley Township
Rock County, Wisconsin, made May the 19th 1869

I hereby certify that the following is a correct record of said survey as made by me.

COUNTY BUILDING
IN CITY OF BELOIT

(Signed) R.K. Lee
R.K. Lee County Surveyor.



Copied from P. 279 Vol. 1 County Surveyors Record.