

PLAT AND RECORD

345

Of a Survey on Section 8 T 2 R 12 E. of the 4 P. M. in Rock Township

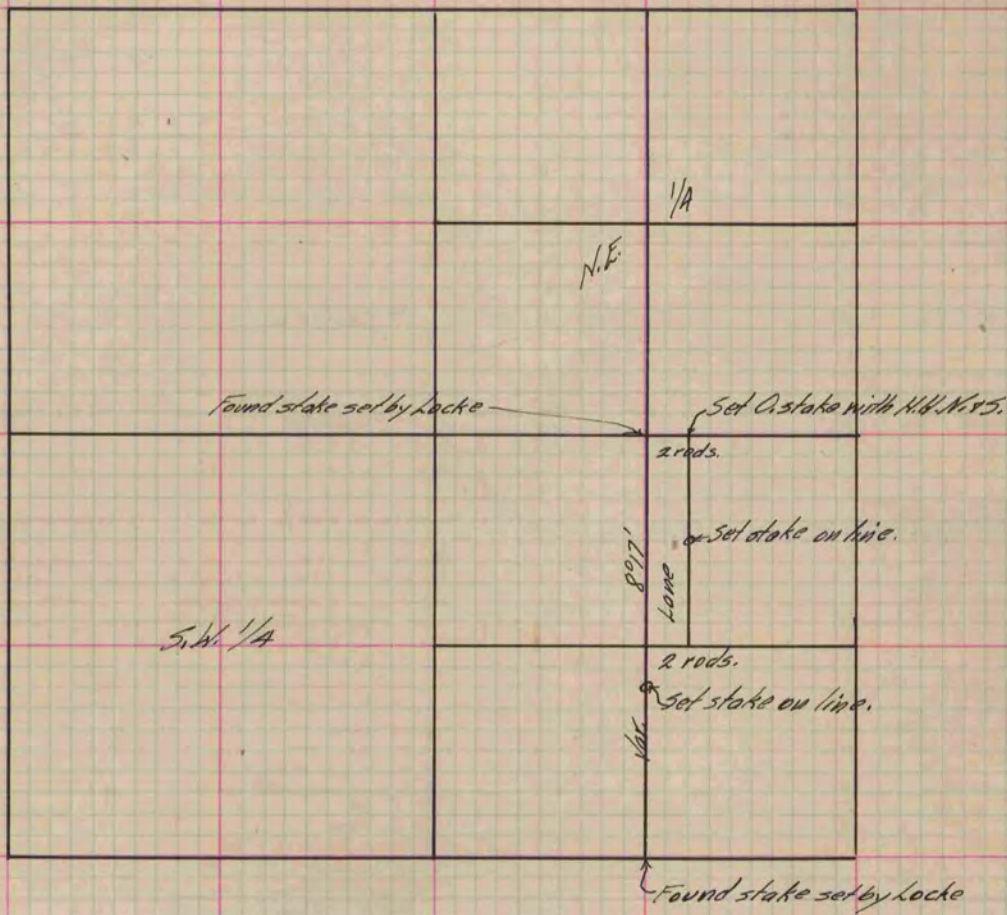
Rock County, Wisconsin, made May the 25 1869

I hereby certify that the following is a correct record of said survey as made by me.

COUNTY BUILDING
IN CITY OF BELOIT

(Signed) R. K. Lee
RKL

Dep. County Surveyor.



Copied from P. 280 Vol. 1 County Surveyor's Record