

PLAT AND RECORD

Of a Survey on Section 26 T 4 R 13 E. of the 4 P. M. in Milton Township

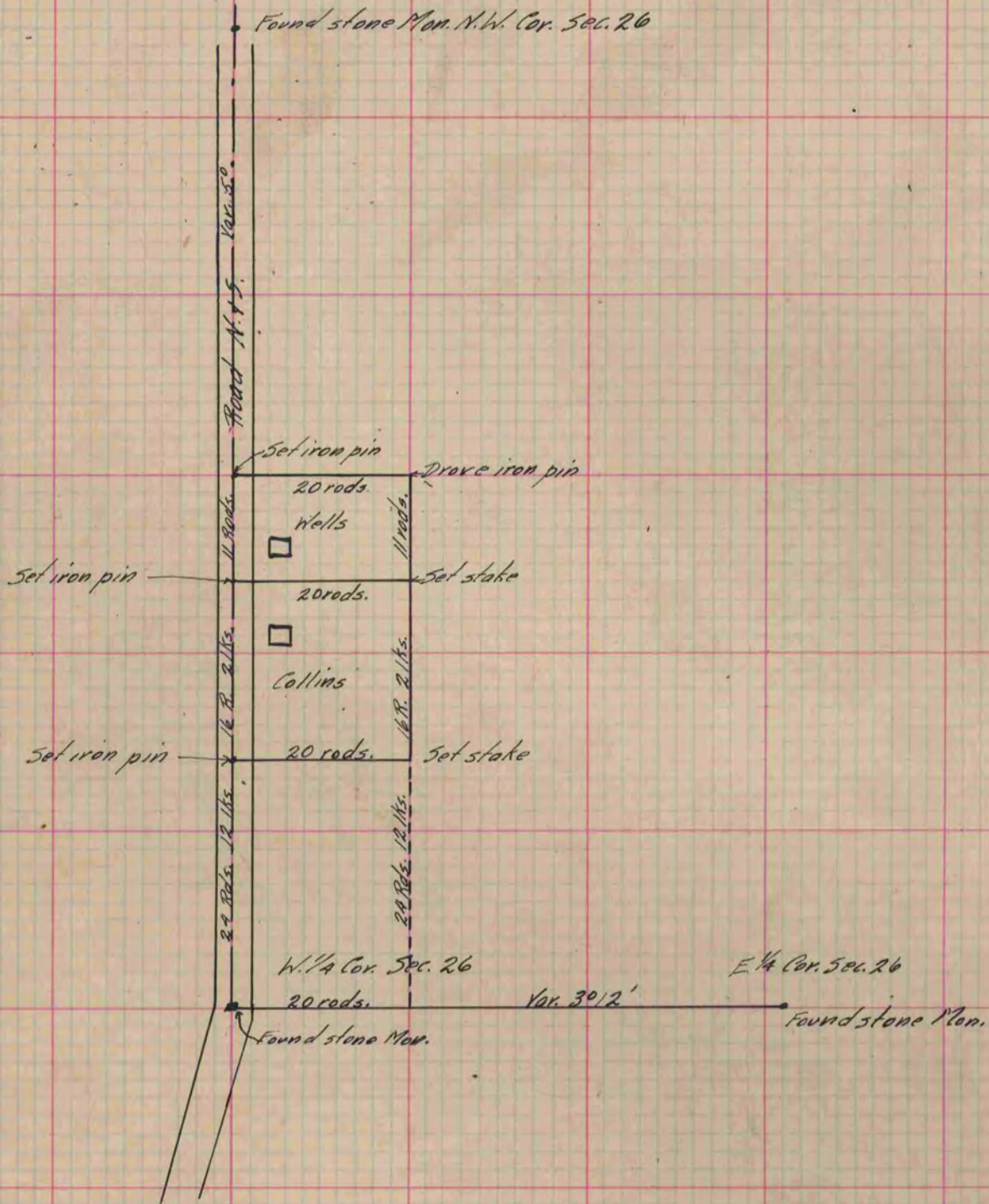
Rock County, Wisconsin, made May the 20 1880

I hereby certify that the following is a correct record of said survey as made by me.

COUNTY BUILDING
IN CITY OF БЕЛОIT

(Signed) R. H. Lee
RHL

County Surveyor.



Copied from P. 253 Vol. 2 County Surveyor's Record.