

# PLAT AND RECORD

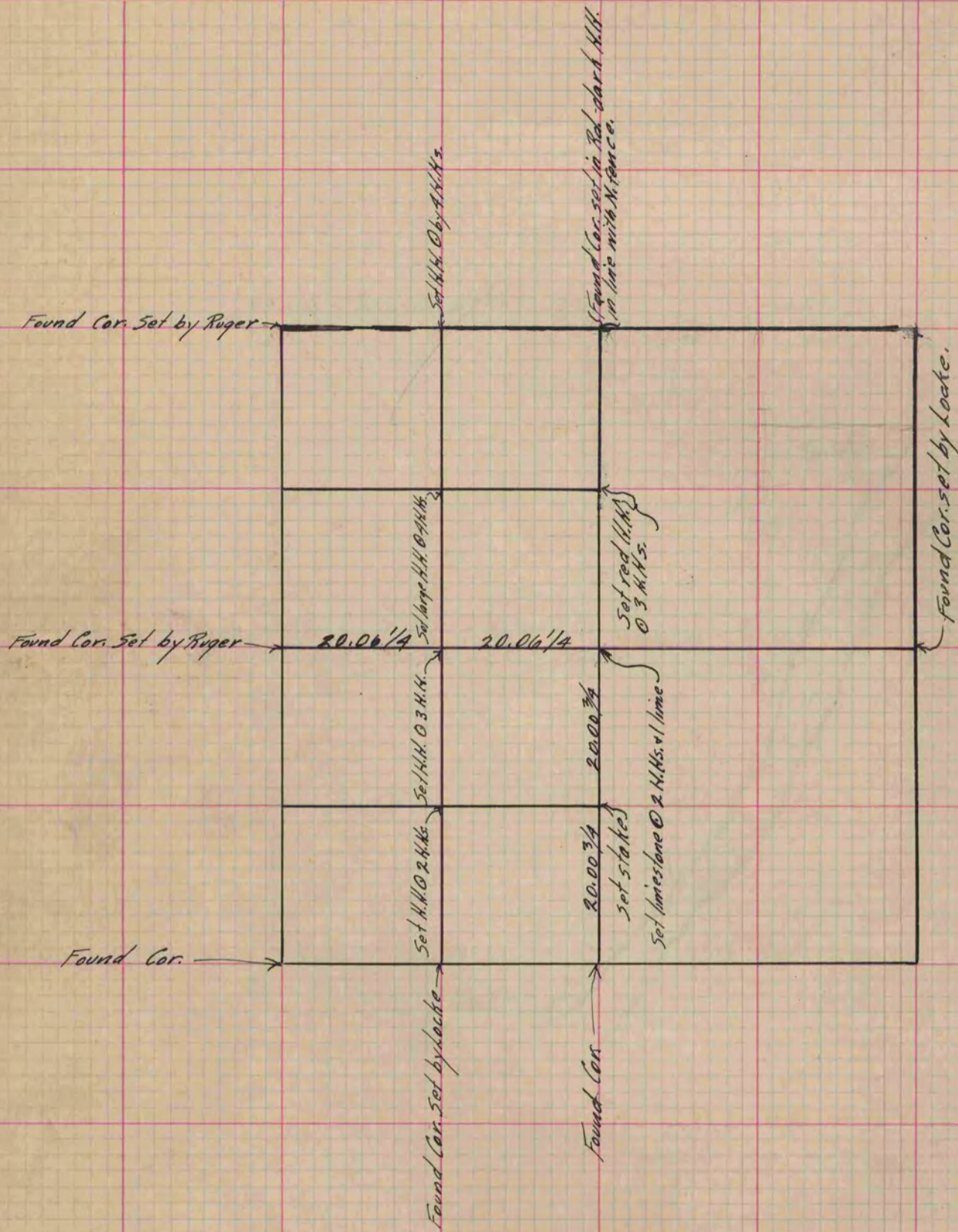
Of a Survey on Section 29 T 2 R 14 E. of the 4 P. M. in Bradford Township  
Rock County, Wisconsin, made June the 3rd 1873

I hereby certify that the following is a correct record of said survey as made by me.

COUNTY BUILDING  
IN CITY OF БЕЛОIT

(Signed) R. H. Lee  
R.H.L.

{ Deputy  
County Surveyor.



Copied from Page 61 Vol. 2 Original County Surveyor's Record.