

# PLAT AND RECORD

159

PG 179 JAMESVILLE  
REC 12/17/75 DAB

Of a Survey on Section 34 T 1 R 12 E. of the 4 P. M. in Beloit Township

Rock County, Wisconsin, made August the 1st 1930

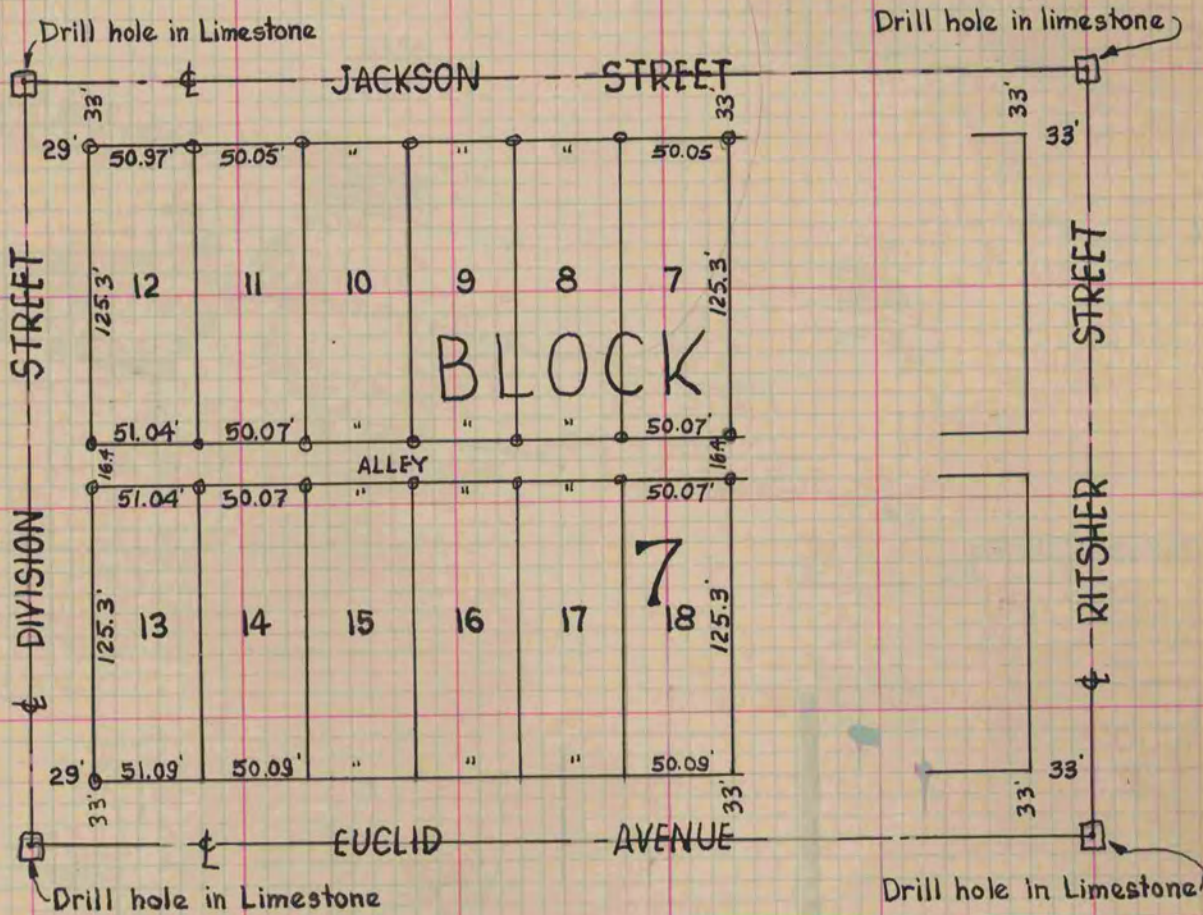
I hereby certify that the following is a correct record of said survey as made by me.

RAB

County Surveyor.

COUNTY BUILDING  
IN CITY OF БЕЛОИТ

PART OF BLOCK 7, GRAND AVE. PARK ADDN.



Note: ⊕ indicates Gas Pipes at Lot corners.

# 1799