

PLAT AND RECORD

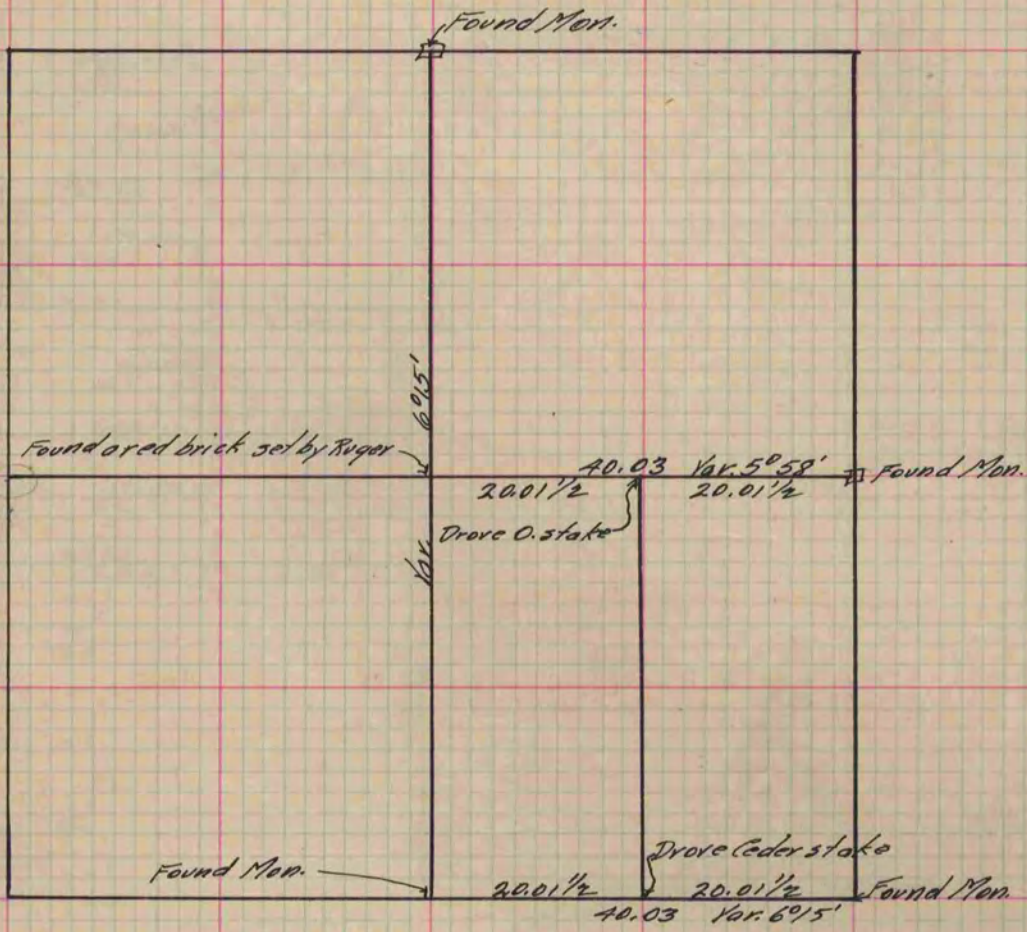
Of a Survey on Section 7 T 2 R 13 E. of the 4 P. M. in La Prairie Township
Rock County, Wisconsin, made September the 13th 1881

I hereby certify that the following is a correct record of said survey as made by me.

COUNTY BUILDING
IN CITY OF BELOIT

(Signed) R. H. Lee
R.H.L.

County Surveyor.



Copied from P. 271 Vol. 2 County Surveyor's Record.