

PLAT AND RECORD

COUNTY BUILDING
IN CITY OF BELOIT

Of a Survey on Section 4, 3 & 11 T 3 R 12 E. of the 4 P. M. in Janesville Township

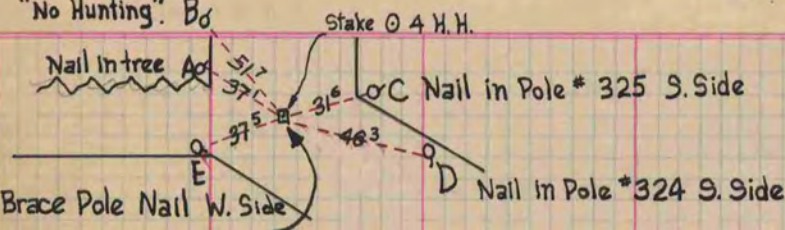
Rock County, Wisconsin, made April the 7th and 9th 1921

I hereby certify that the following is a correct record of said survey as made by me.

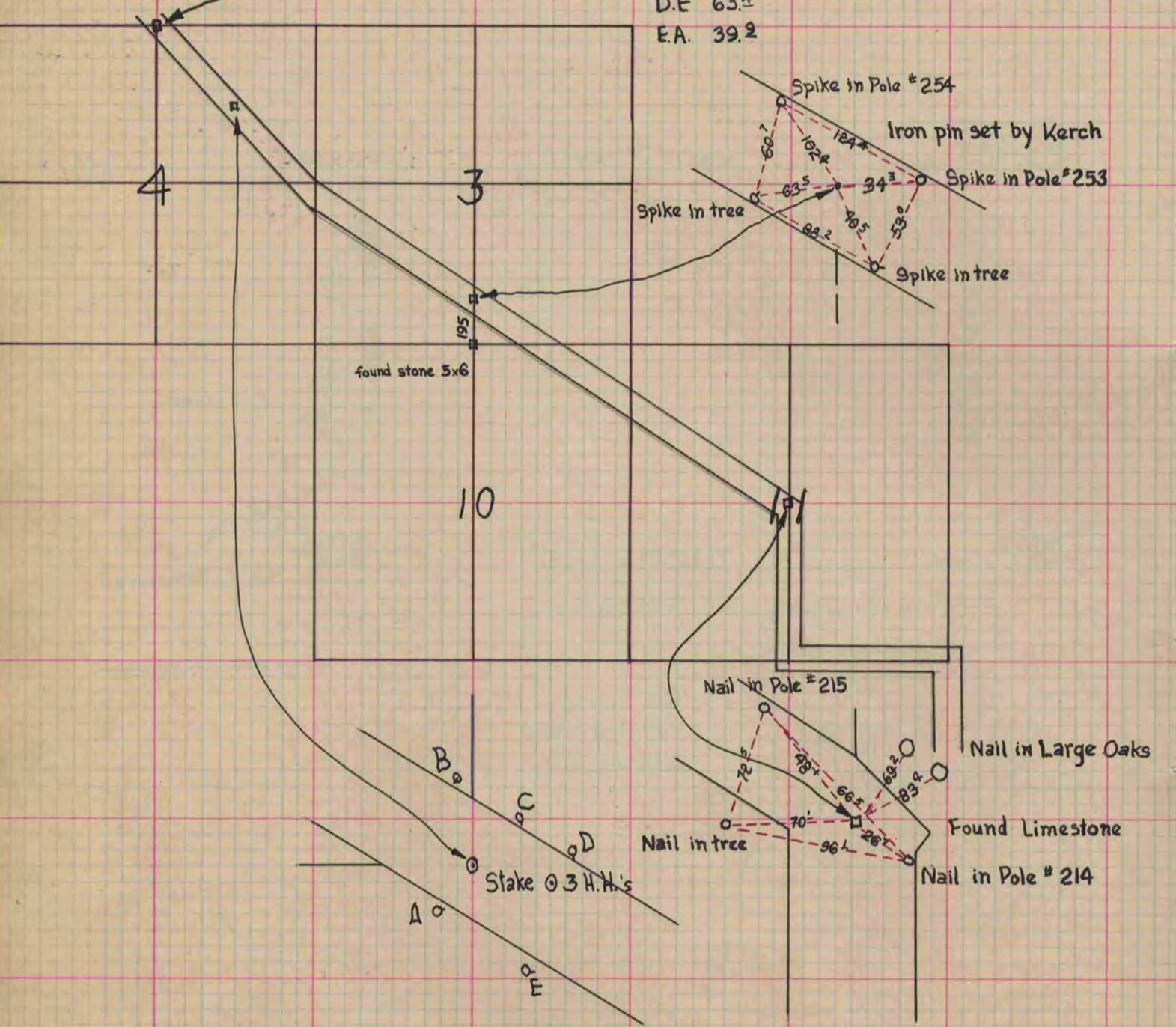
(Signed) Alex W. Ely

County Surveyor.

Nail in Post
"No Hunting". B₀



Dist. Between
A.B. 39.7
B.C. 68.6
C.D. 29.1
D.E. 63.4
E.A. 39.2



Point	Dist.	Description
A	32.6	Nail in 5 th B. Walnut
B	48.4	" " 1 st " "
C	28.7	" " 4 th " "
D	41.5	" " 6 th " "
E	31.4	" " T. Pole