

PLAT AND RECORD

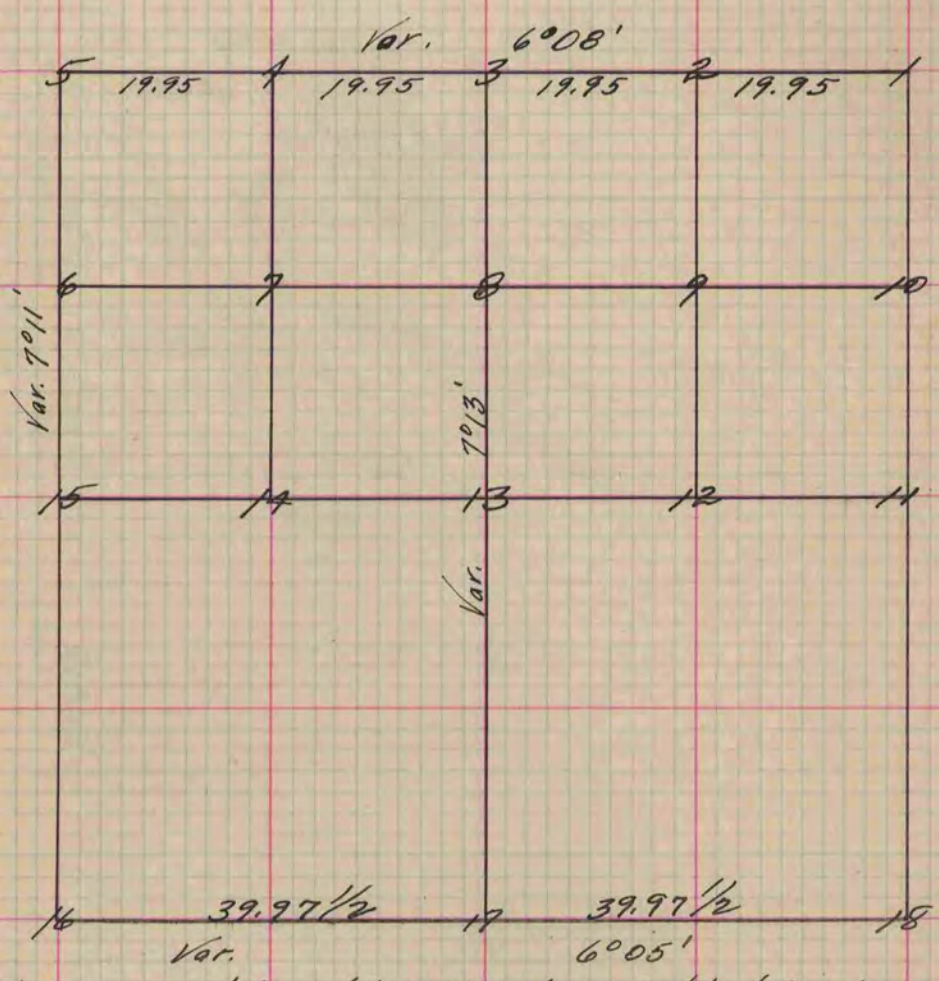
Of a Survey on Section 1 T 2 R 3 E. of the 4 P. M. in La Prairie Township
Rock County, Wisconsin, made May the 25th 1859

I hereby certify that the following is a correct record of said survey as made by me.

COUNTY BUILDING
IN CITY OF БЕЛОIT

Signed Edward Ruger.
ERR

County Surveyor.



at After wards found 1/4 Post.

- Fig. 1. Surrounded post by 4 limestones and took bearing stones.
Limestone 16 inches by 9 broad by 2 thick. S. 55°04' E. 55 Var. 6°50'
- " " " " " " " " S. 48°08' W. 55 " " "
- Put in North 1/4 post by Sec. Corners & surrounded post by 3 limestones.
- " 5 Surrounded post by 4 limestone + one hard head & planted witness stones.
Limestone 14 x 8 x 4 - above bench - S. 73°30' E. 54 - Limestone 10 x 9 - S. 76°30' W. 55 - Var. 6°45'
- " 8 Surrounded post by 4 limestones.
- " 10 " " " " "
- * Put in East 1/4 Post (Fig. 11) by Sec. Corners and surrounded post by 4 Limestones.
- Fig. 13 Surrounded post by 4 limestones.
- " 15 " " " " "
- " 16 " " " " "
- " 17 " " " " "

The East line of the Section and the line through the Centre North & South were run by Forward and back sights on account of local attraction.

Copied from Page 112 Vol. 1 County Surveyor's Record.