

# PLAT AND RECORD

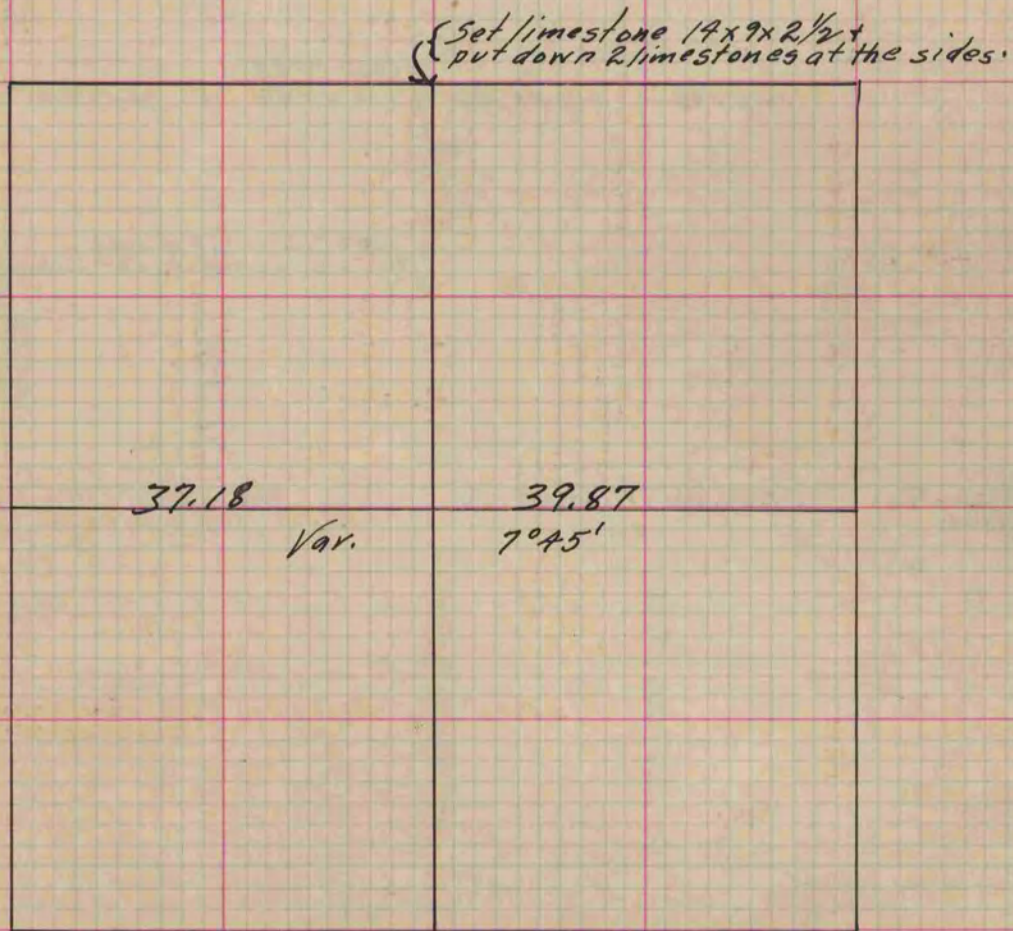
Of a Survey on Section 18 T 3 R 12 E. of the 4 P. M. in Sanesville Township

Rock County, Wisconsin, made April the 17<sup>th</sup> 1860

I hereby certify that the following is a correct record of said survey as made by me.

COUNTY BUILDING  
IN CITY OF BELOIT

(Signed) Edward Ruger.  
*ERM* County Surveyor.



*Copied from Page 139 Vol. 1. Original County Surveyor's Record.*