

PLAT AND RECORD

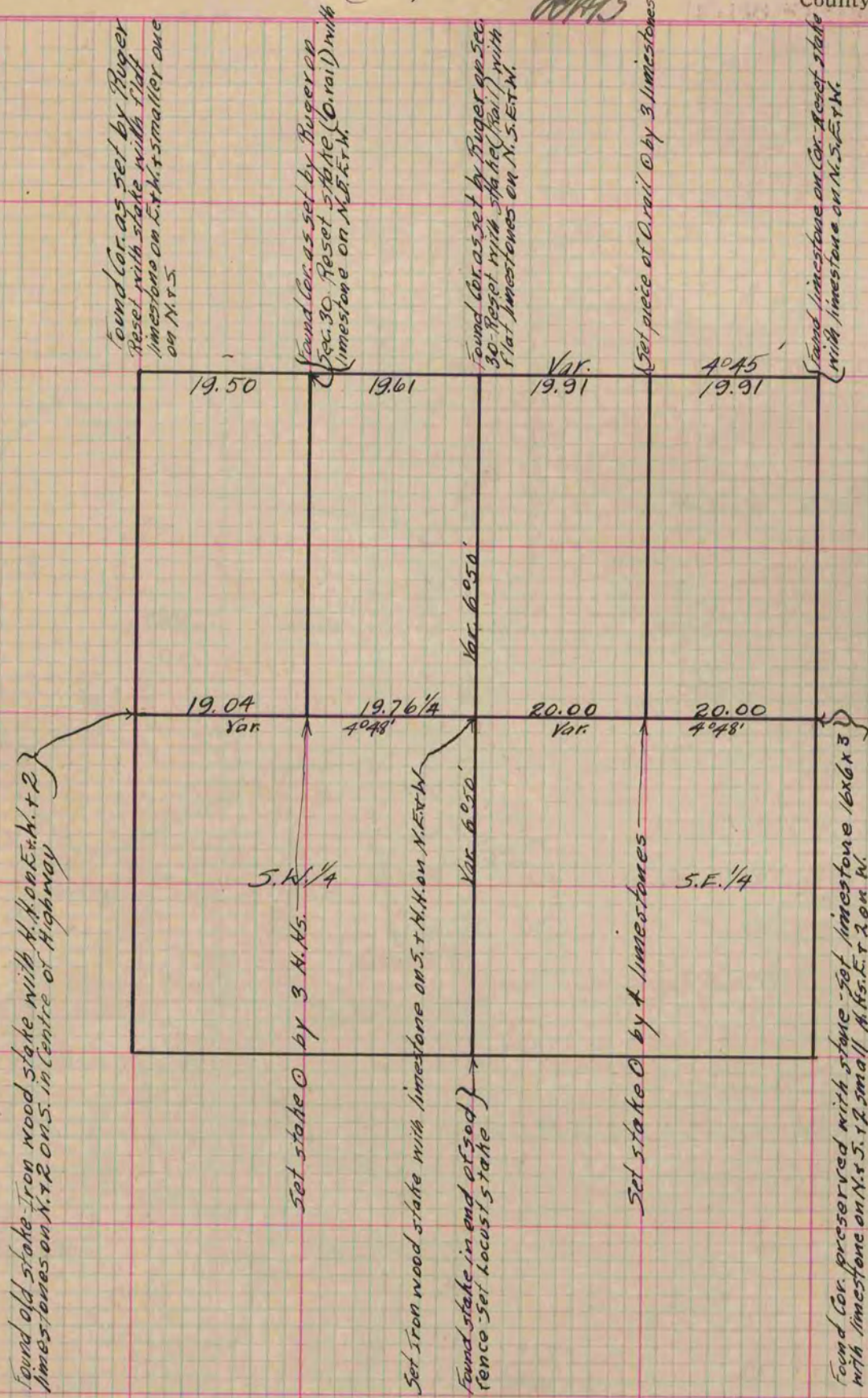
Of a Survey on Section 31 T 3 R 14 E. of the 4 P. M. in Johnstown Township
Rock County, Wisconsin, made November the 7 1867

I hereby certify that the following is a correct record of said survey as made by me.

COUNTY BUILDING
IN CITY OF БЕЛОIT

(Signed) S. D. Locke
S. D. Locke

County Surveyor.



Copied from Page 255 Vol. 1. Original County Surveyor's Record