

# PLAT AND RECORD

333

Of a Survey on Section 20 T 1 R 14 E. of the 4 P. M. in Clinton Township

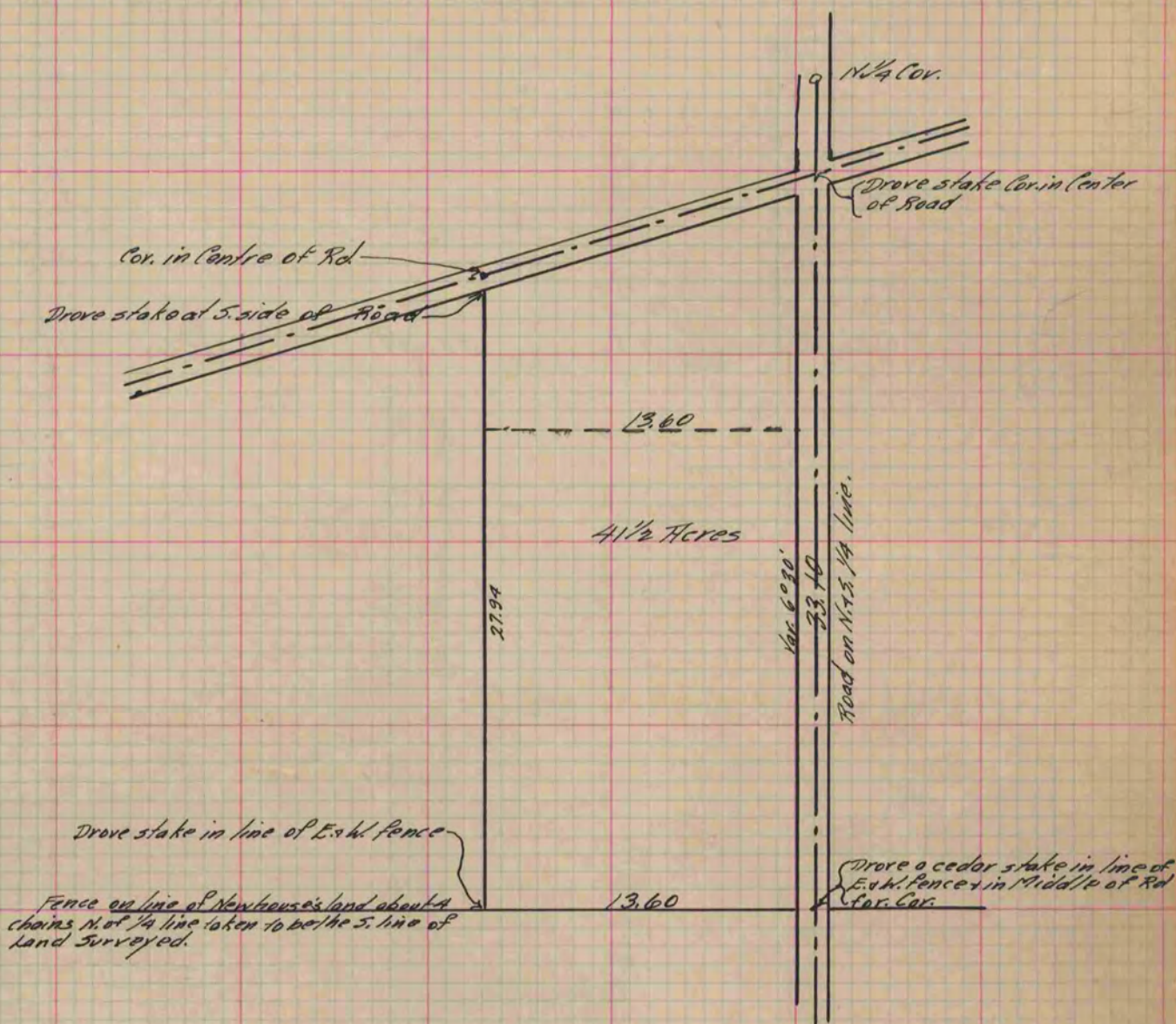
Rock County, Wisconsin, made September the 19<sup>th</sup> 1881

I hereby certify that the following is a correct record of said survey as made by me.

COUNTY BUILDING  
IN CITY OF BELOIT

(Signed) R. K. Lee  
RKL

County Surveyor.



Copied From P. 272 Vol. 2 County Surveyor's Record.