

PLAT AND RECORD

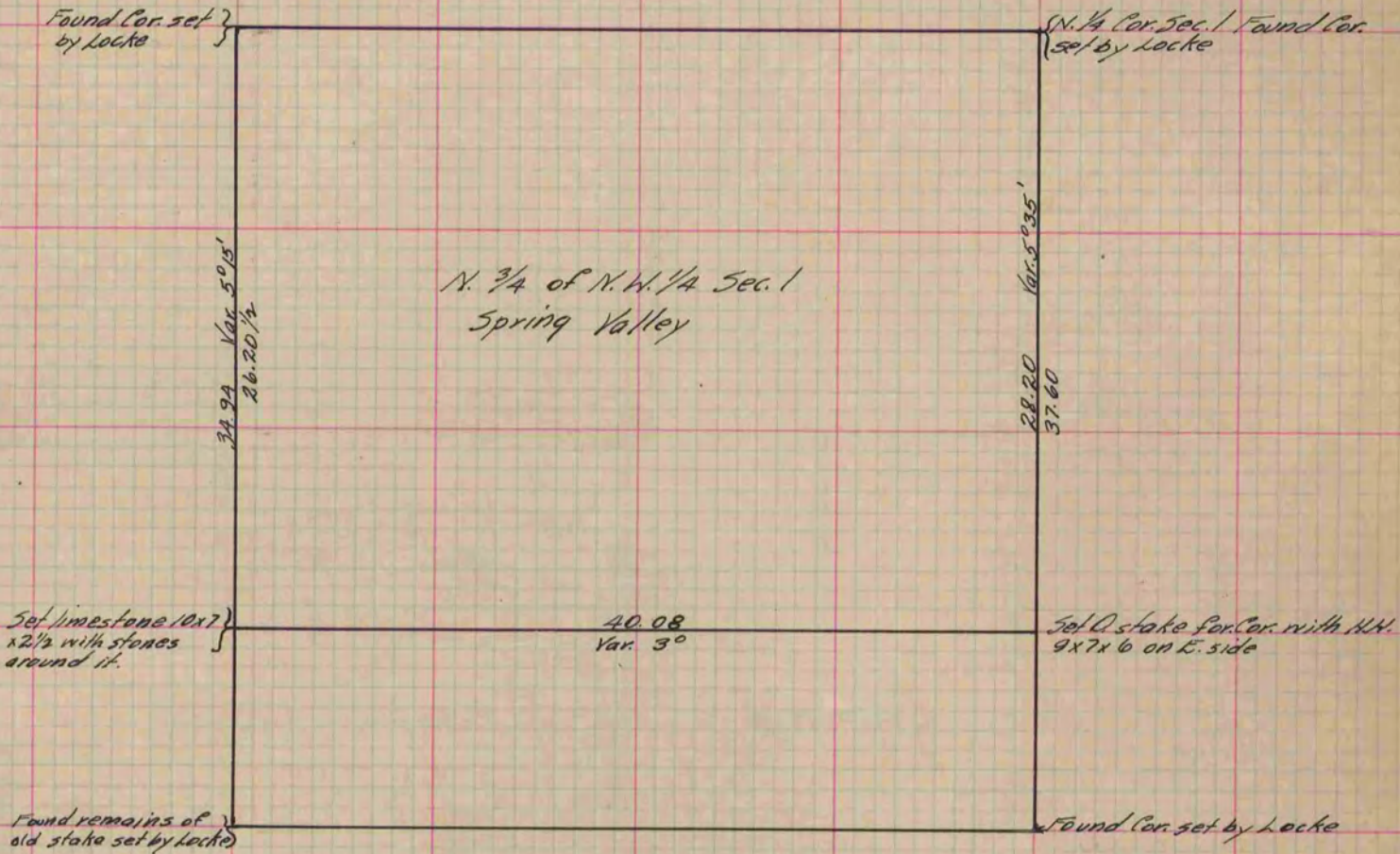
Of a Survey on Section 1 T 2 R 10 E. of the 4 P. M. in Spring Valley Township
Rock County, Wisconsin, made October the 14 1880

I hereby certify that the following is a correct record of said survey as made by me.

(Signed) R.K. Lee
RAL

Dept. _____
County Surveyor.

COUNTY BUILDING
IN CITY OF BELOIT



Copied from P. 260 Vol. 2 County Surveyors Record.