

# PLAT AND RECORD

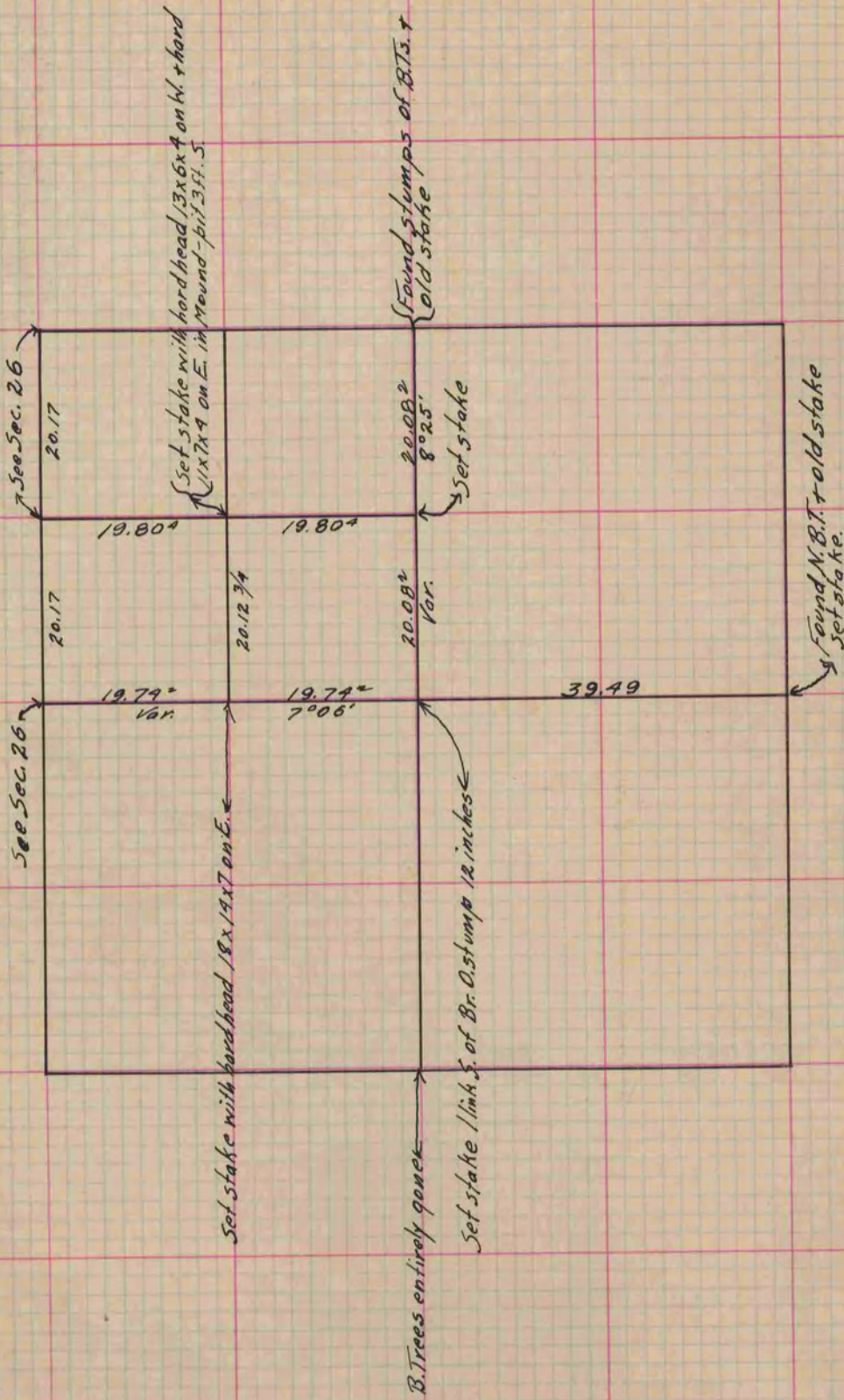
Of a Survey on Section 25 T 4 R 10 E. of the 4 P. M. in Union Township  
Rock County, Wisconsin, made May the 5<sup>th</sup> 1865

I hereby certify that the following is a correct record of said survey as made by me.

(Signed) S. D. Locke  
RLZ

County Surveyor.

COUNTY BUILDING  
IN CITY OF BELOIT



Copied from Page 217 Vol. 1. Original County Surveyor's Record.