

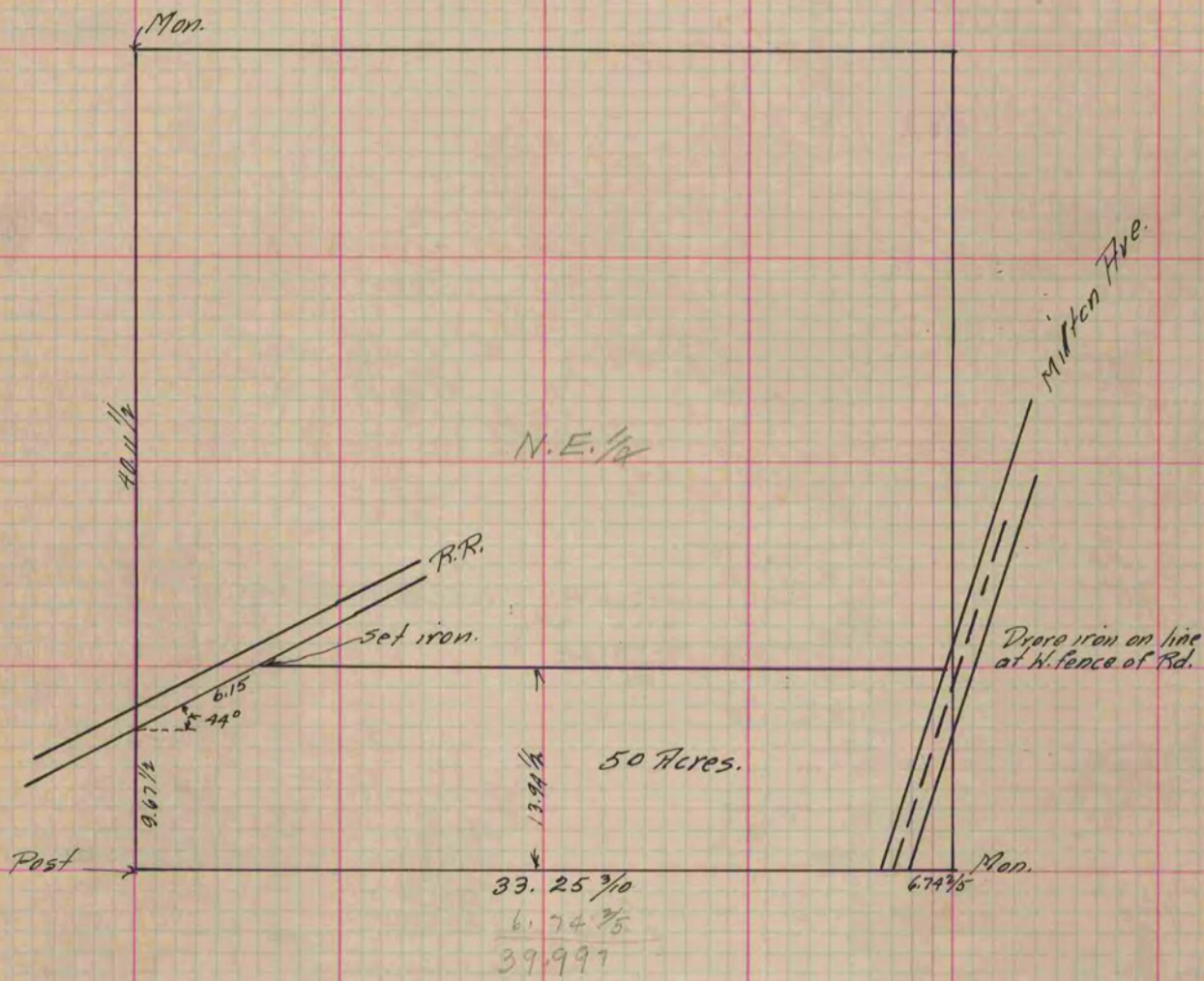
PLAT AND RECORD

Of a Survey on ^{NE 1/4} Section 18 T 9 R 13 E. of the 4 P. M. in Harmony Township
 Rock County, Wisconsin, made Febr. the 6 1900

I hereby certify that the following is a correct record of said survey as made by me.

COUNTY BUILDING
 IN CITY OF BELOIT

(Signed) Perry F. Brane
PMB County Surveyor.



Copied from P. 388 Vol. 2 County Surveyor's Record.