

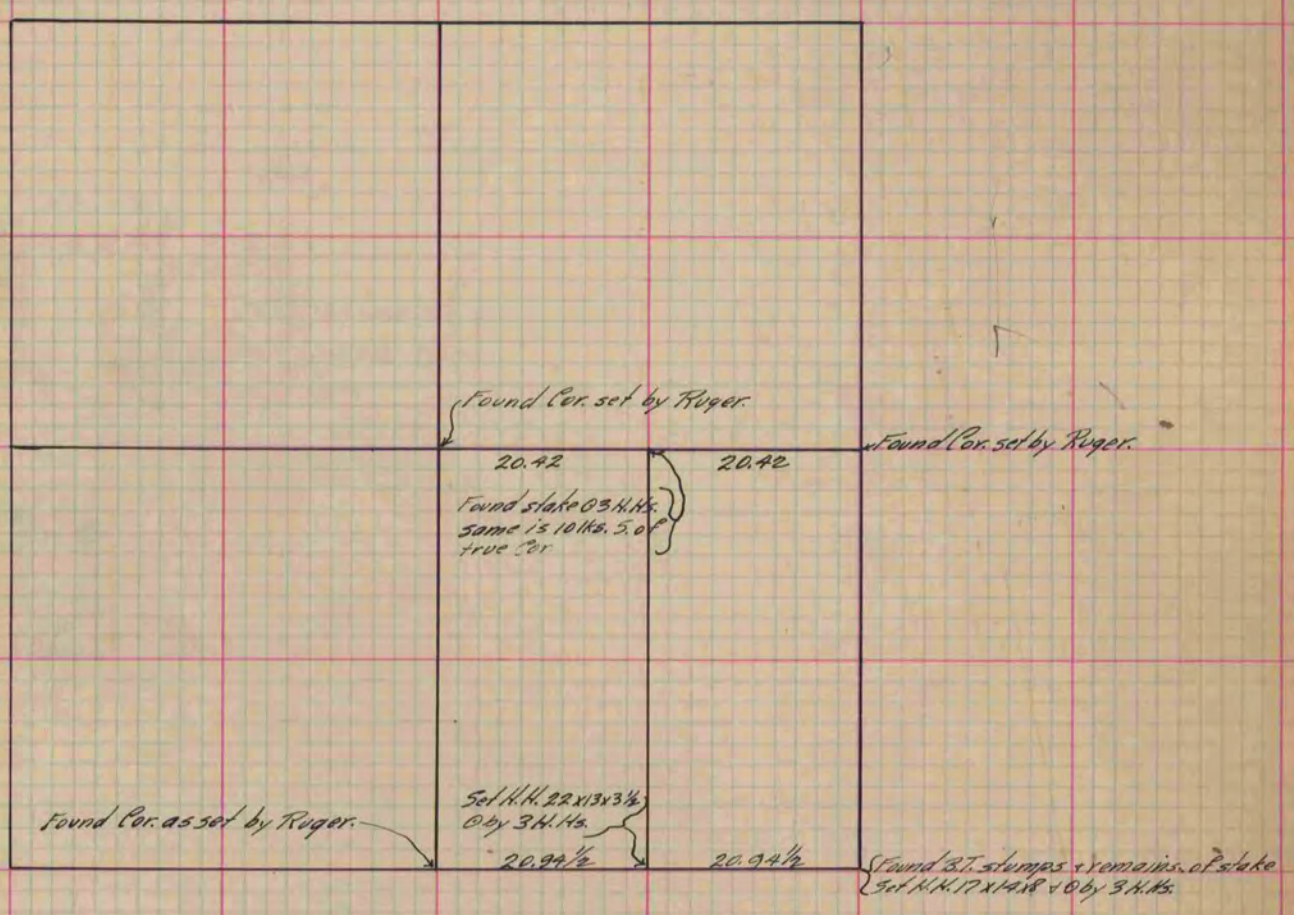
# PLAT AND RECORD

Of a Survey on Section 11 T 2 R 10 E. of the 4 P. M. in Spring Valley Township  
Rock County, Wisconsin, made May the 5<sup>th</sup> 1891

I hereby certify that the following is a correct record of said survey as made by me.

COUNTY BUILDING  
IN CITY OF BELoit

(Signed) O. G. Bleedorn  
O. G. B. Dep. County Surveyor.



*Copied from P. 358 Vol. 2 County Surveyor's Record.*