

PLAT AND RECORD

Of a Survey on Section **23** T **4** R **12** E. of the 4 P. M. in **FULTON** Township

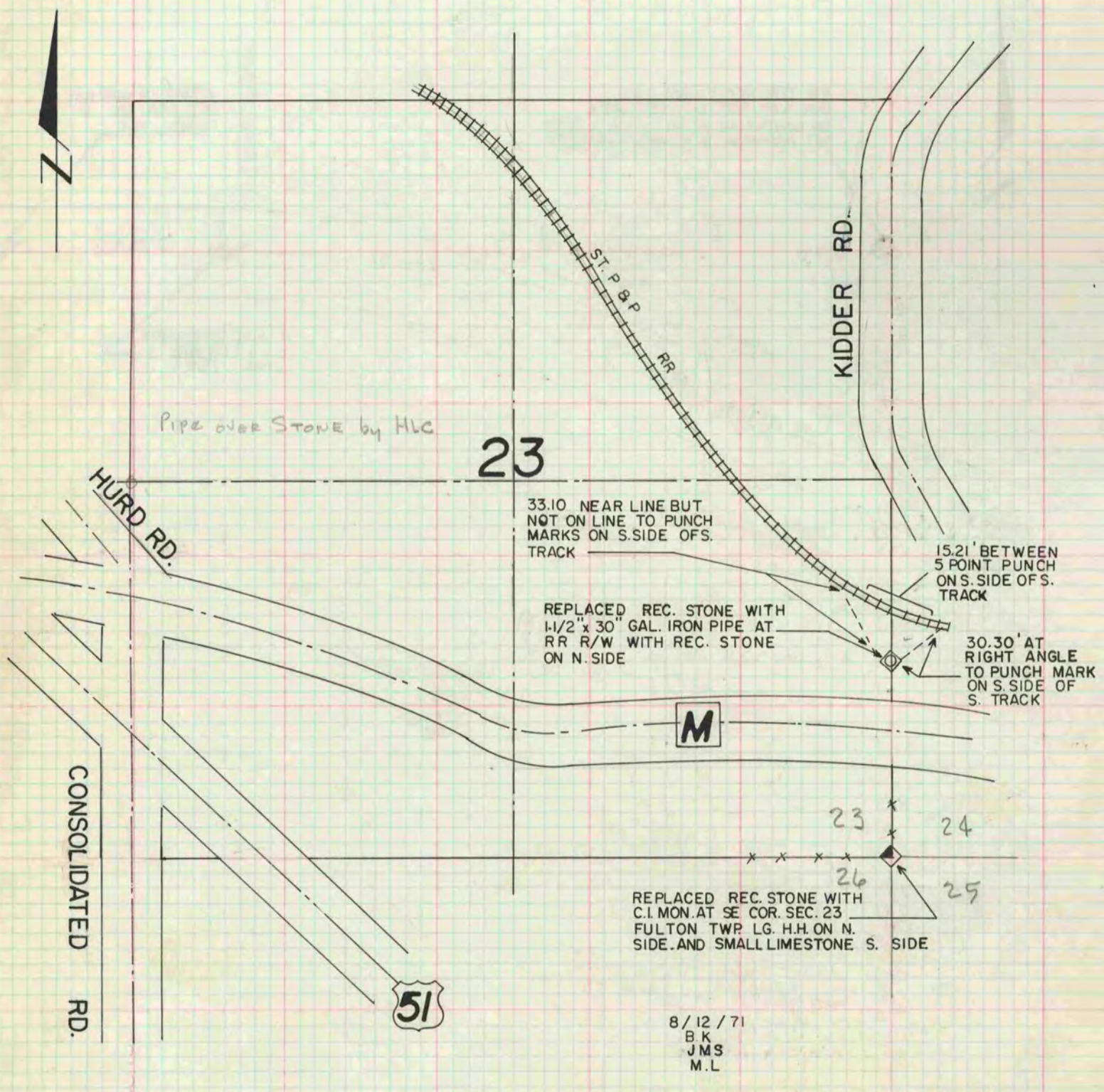
Rock County, Wisconsin, made **AUGUST** the **12** 1971

I hereby certify that the following is a correct record of said survey as made by me.

August J. Bee
County Surveyor.

**COUNTY BUILDING
IN CITY OF BELOIT**

THE GEO. S. BANKARD COMPANY, ST. LOUIS



8/12/71
B.K.
J.M.S.
M.L.