

# PLAT AND RECORD

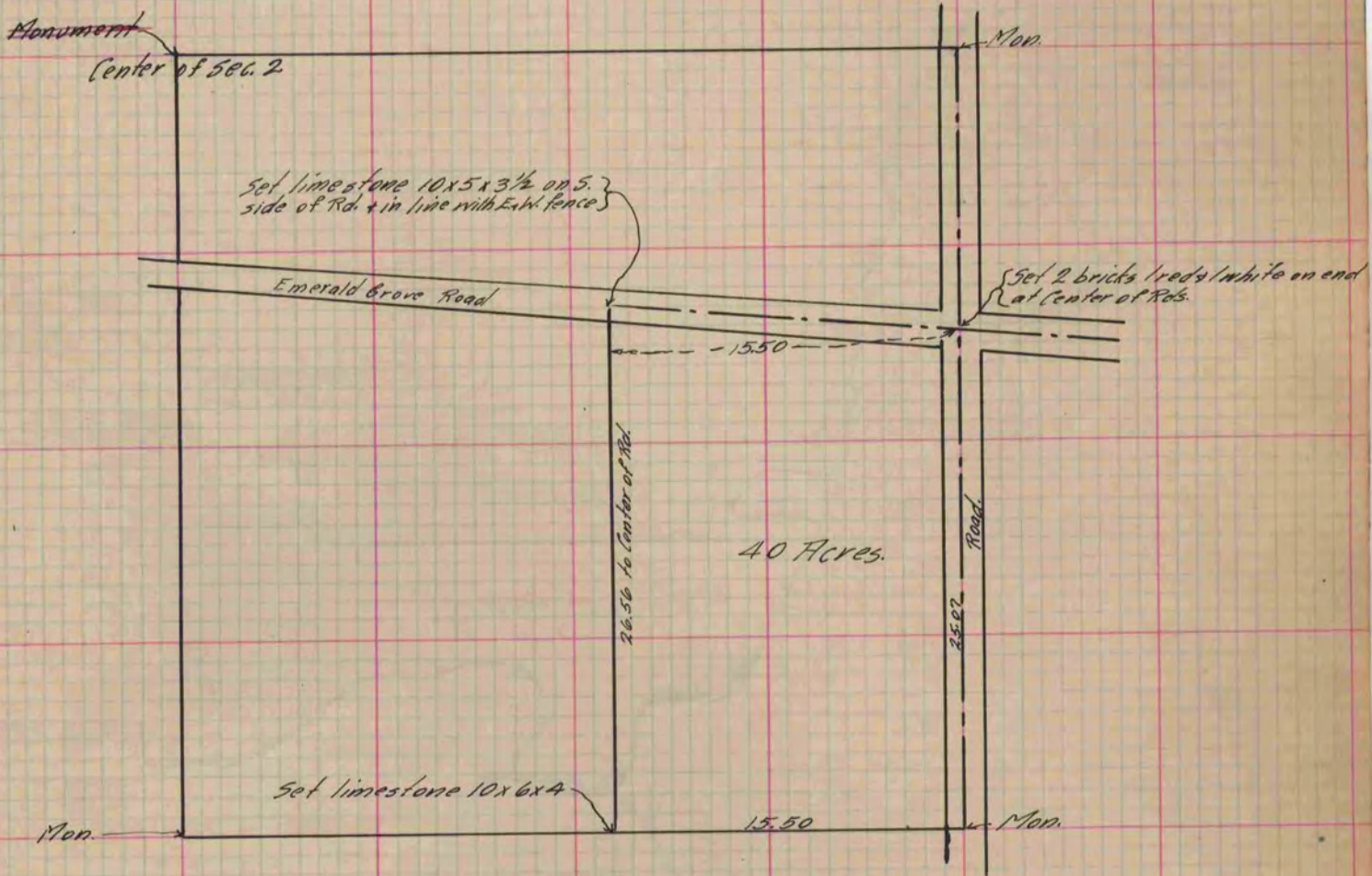
425

Of a Survey on <sup>S.E. 1/4</sup> Section 2 T 2 R 13 E. of the 4 P. M. in La Prairie Township  
Rock County, Wisconsin, made Dec. the 15 1889

I hereby certify that the following is a correct record of said survey as made by me.

COUNTY BUILDING  
IN CITY OF БЕЛОIT

(Signed) O.G. Bledorn  
Dep. County Surveyor.



Copied from P. 343 Vol. 2 County Surveyor's Record.