

PLAT AND RECORD

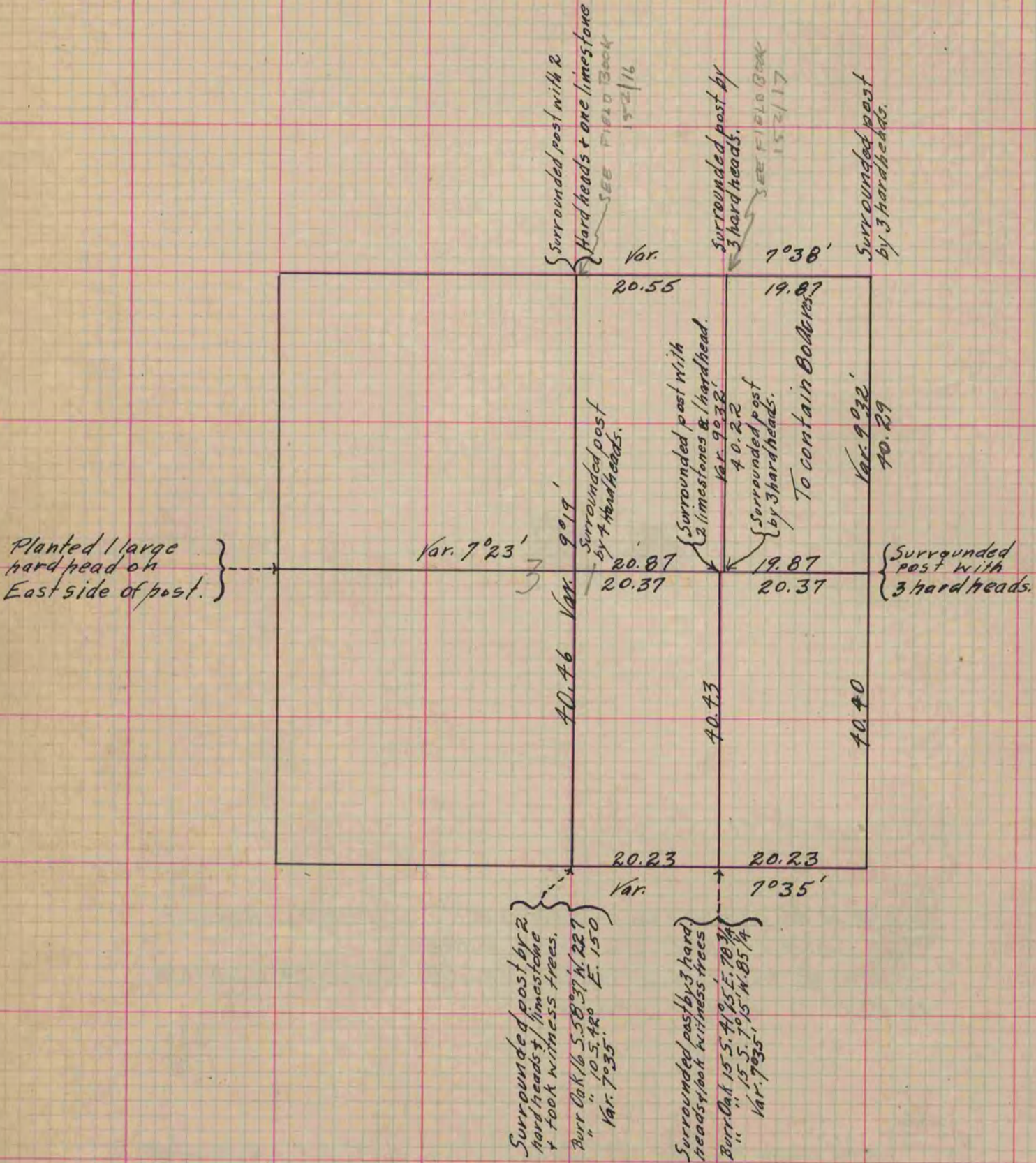
Of a Survey on Section 31 T 3 R 12 E. of the 4 P. M. in Janesville Township
 Rock County, Wisconsin, made August the 29th 1859

I hereby certify that the following is a correct record of said survey as made by me.

COUNTY BUILDING
 IN CITY OF BELOIT

(Signed) Edward Ruger

County Surveyor.



Copied from Page 119 Vol. 1 Original County Surveyor's Record.