

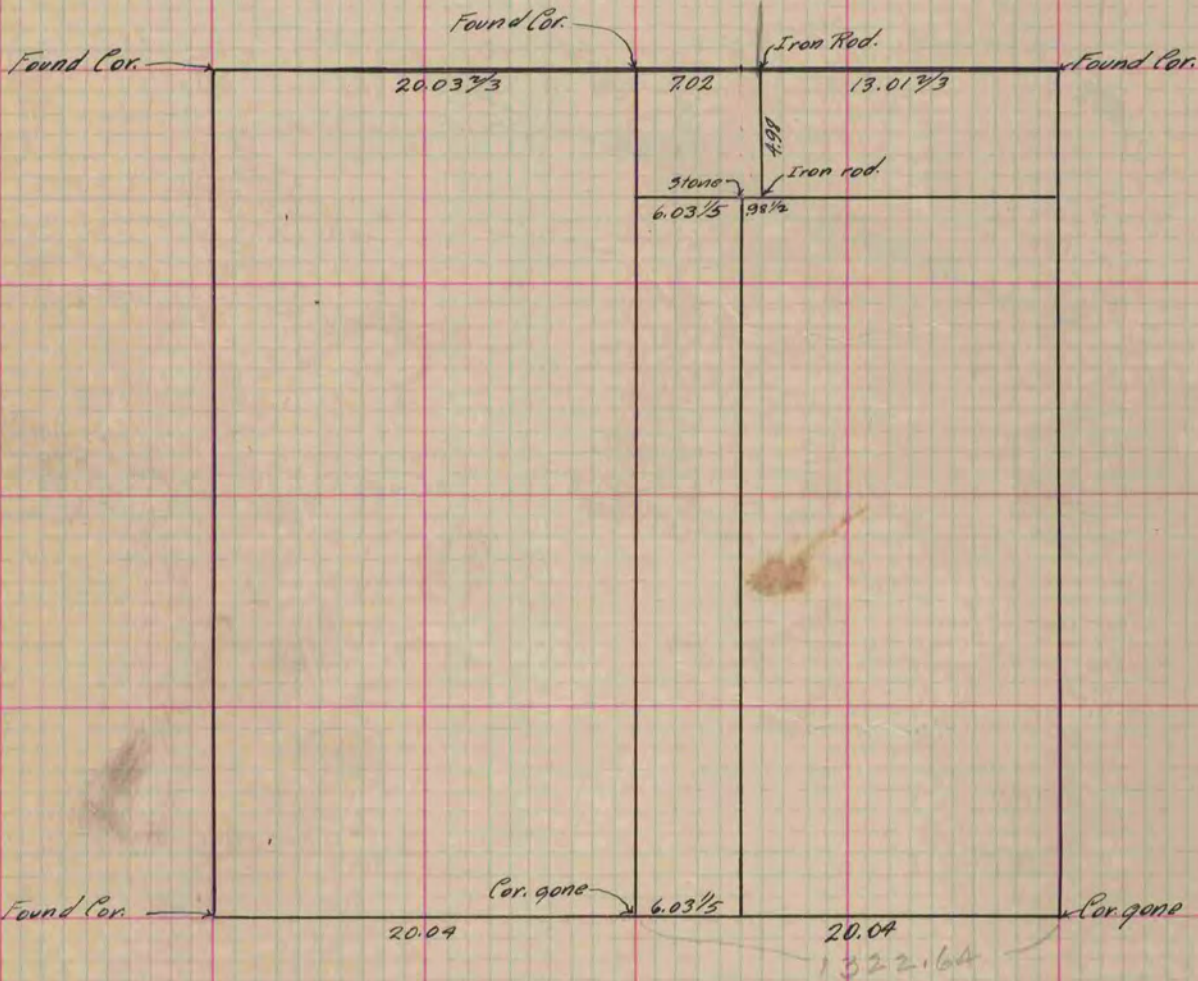
PLAT AND RECORD

Of a Survey on ^{NW 1/4} Section 12 T 2 R 12 E. of the 4 P. M. in Rock Township
 Rock County, Wisconsin, made Sept. the 2 1891

I hereby certify that the following is a correct record of said survey as made by me.

COUNTY BUILDING
 IN CITY OF BELOIT

(Signed) O.G. Bleedorn
 J.P.M. Dep. County Surveyor.



13.01 2/3
 7.02
 20.03

.66
 26.4

0.0366
 66
 2196
 2196
 24156

Copied from P. 360 Vol. 2 County Surveyor's Record.