

PLAT AND RECORD

Of a Survey on Section 9 T 4 N. R 13 E. of the 4 P. M. in MILTON Township

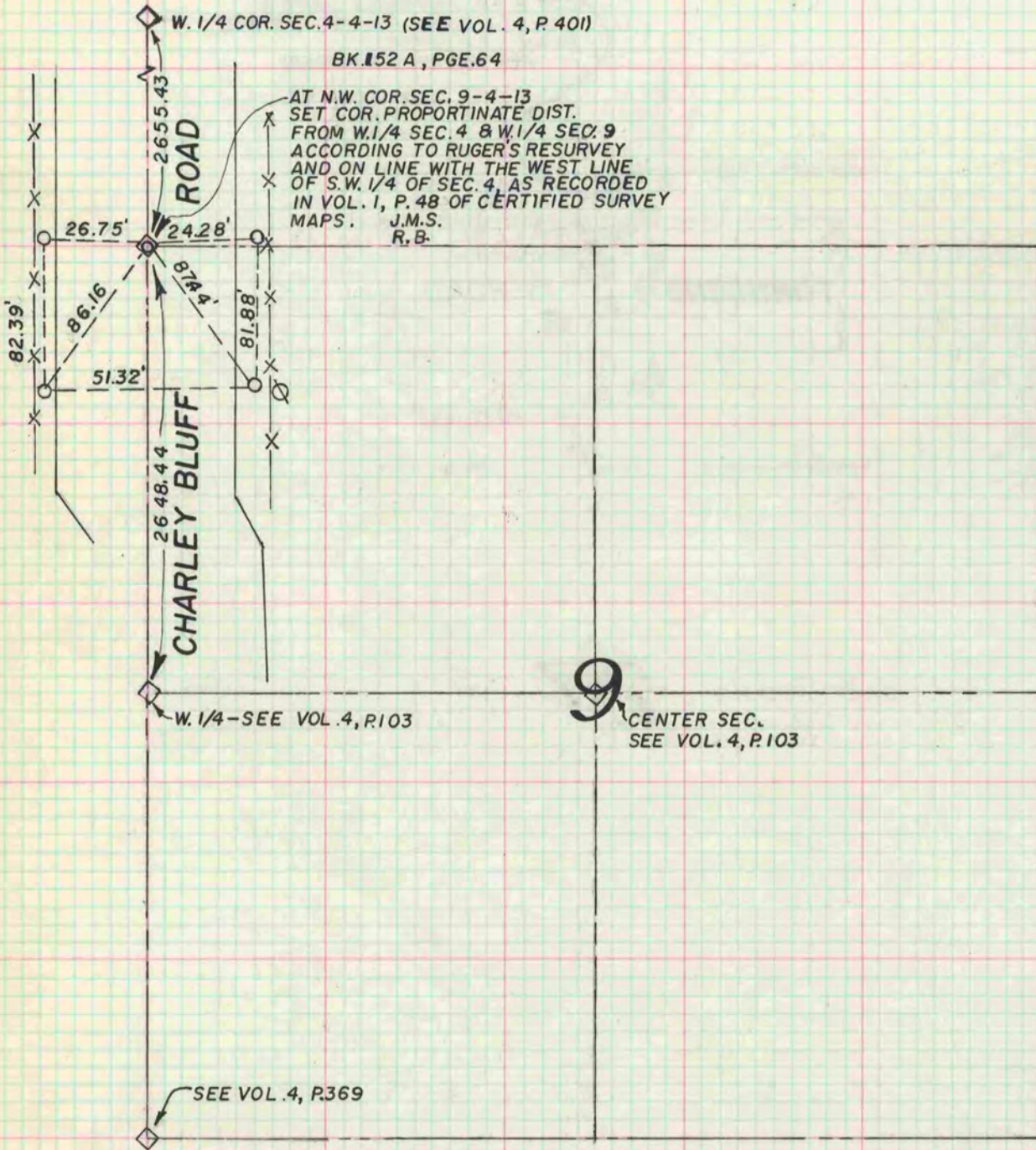
Rock County, Wisconsin, made DECEMBER the 1 1971

I hereby certify that the following is a correct record of said survey as made by me.

Hugh J. Deel
County Surveyor.

COUNTY BUILDING
IN CITY OF БЕЛОIT

THE GEO. D. BARNARD COMPANY, ST. LOUIS



NOTE: O = 1" X 24" IRON PIPES

