

PLAT AND RECORD

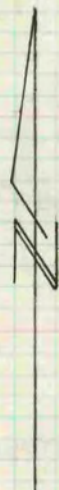
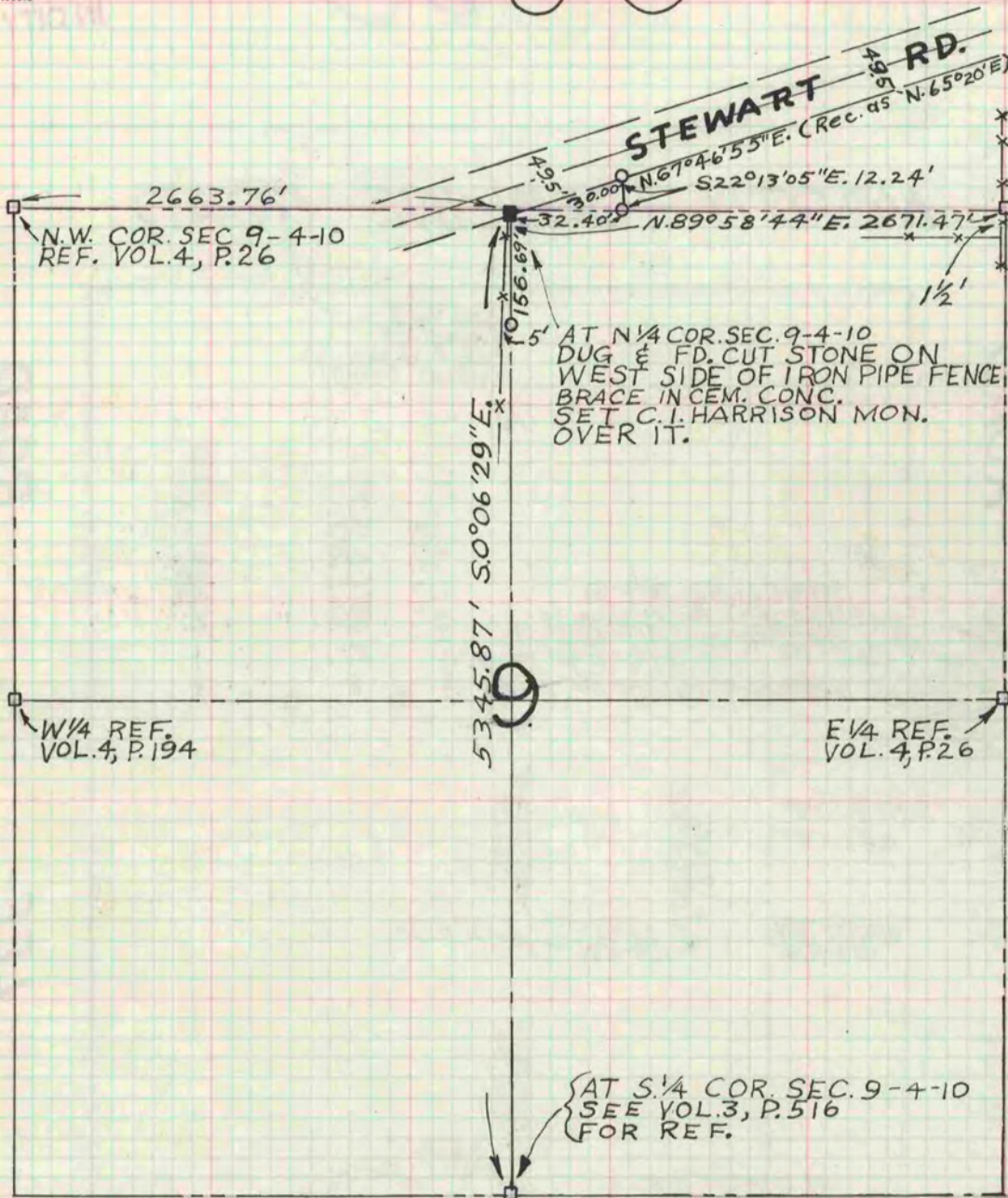
Of a Survey on Section 9 T 4 N R 10 E. of the 4 P. M. in UNION Township

Rock County, Wisconsin, made OCTOBER the 14 1971

I hereby certify that the following is a correct record of said survey as made by me.

Hugh J. Lee
County Surveyor.

COUNTY BUILDING
IN CITY OF BELLEVILLE



(BK. 152 A, P. 60)

10/14/71
J.M.S.
G.B.

NOTE: O = IRON PIPES SET