

# PLAT AND RECORD

Of a Survey on Section / T / R 13 E. of the 4 P. M. in Turtle Township

Rock County, Wisconsin, made March the 28th 1882

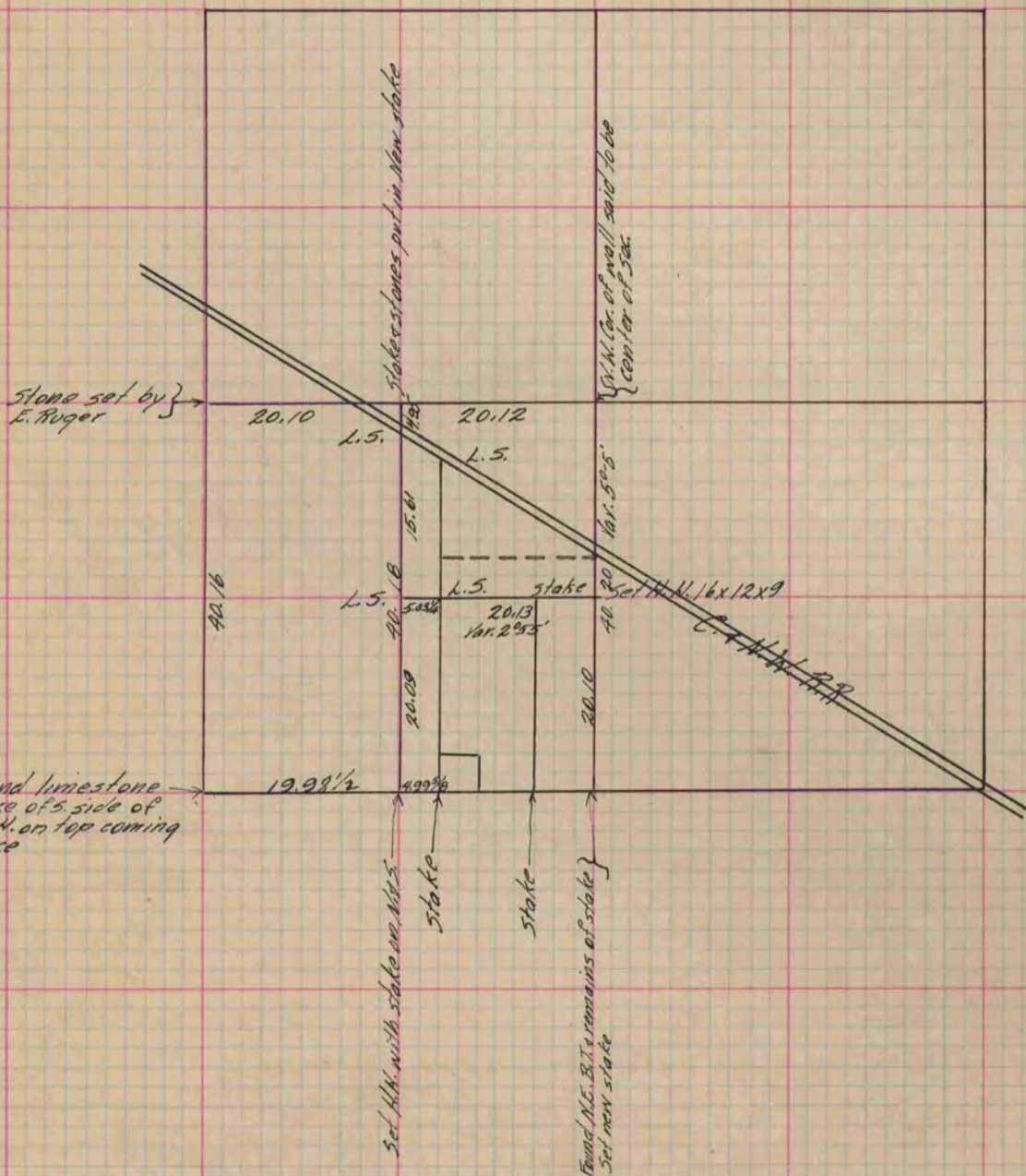
I hereby certify that the following is a correct record of said survey as made by me.

COUNTY BUILDING  
IN CITY OF BELOIT

(Signed) S. F. Holmes.  
R.A.B.

County Surveyor.

Sec. 1 Turtle



Copied from P. 286 Vol. 2 County Surveyor's Record.