

PLAT AND RECORD

Of a Survey on Section 19 T 2 R 14 E. of the 4 P. M. in Bradford Township

Rock County, Wisconsin, made the _____ 19

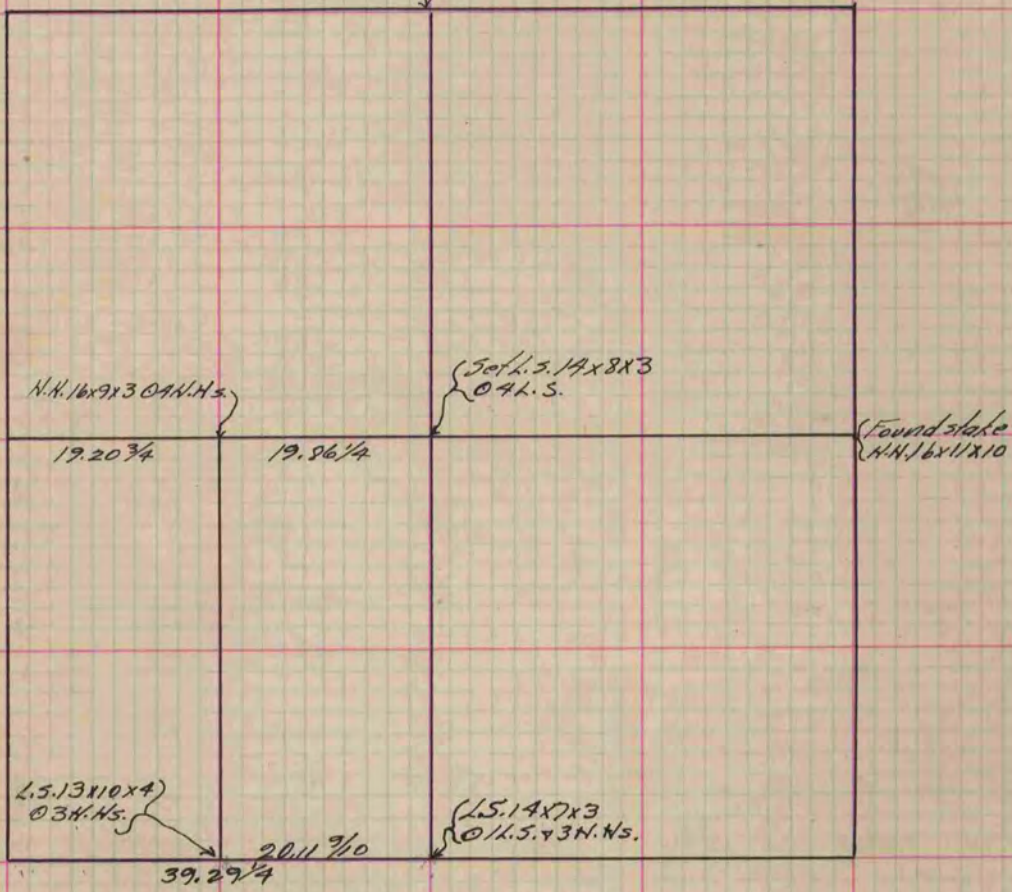
I hereby certify that the following is a correct record of said survey as made by me.

COUNTY BUILDING
IN CITY OF BELOIT

(Signed) P.F. Brown
P.F.B.

County Surveyor.

Found L.S. - set L.S. 1/6 x 8 x 8 on top



39.29 25
20.11 50
19.17 35

Copied from P. 383 Vol. 2 County Surveyor's Record.