

# PLAT AND RECORD

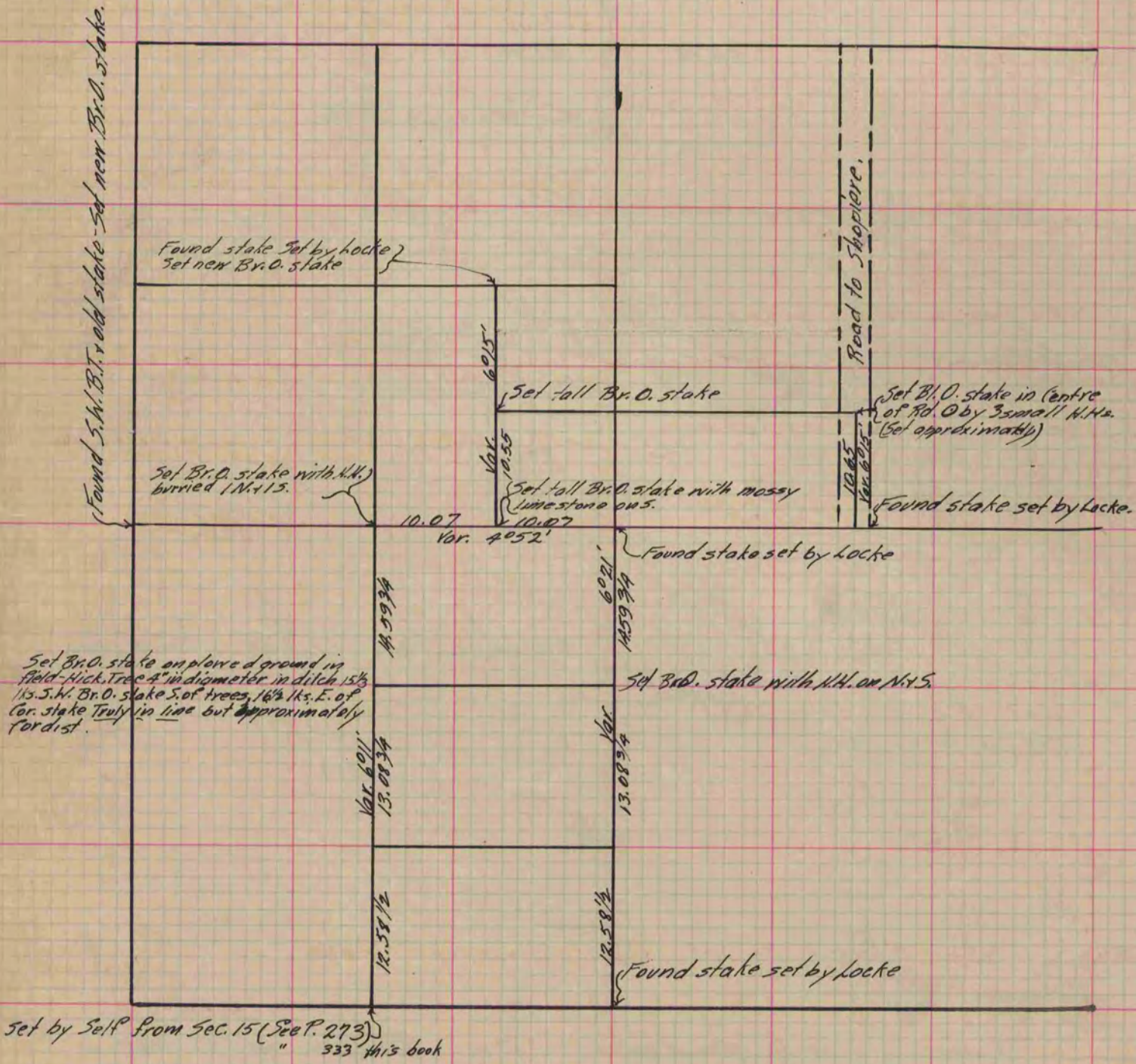
Of a Survey on Section 10 T 1 R 13 E. of the 4 P. M. in Turtle Township

Rock County, Wisconsin, made November the 6<sup>th</sup>, 10<sup>th</sup>, 11<sup>th</sup>, + 12<sup>th</sup> 1868

I hereby certify that the following is a correct record of said survey as made by me.

COUNTY BUILDING  
IN CITY OF BELOIT

(Signed) R. H. Lee  
RHL County Surveyor.



Copied from P. 274 Vol. 1 Original County Surveyor's Record.