

PLAT AND RECORD

Of a Survey on Section 6 T 2 R 13 E. of the 4 P. M. in La Prairie Township

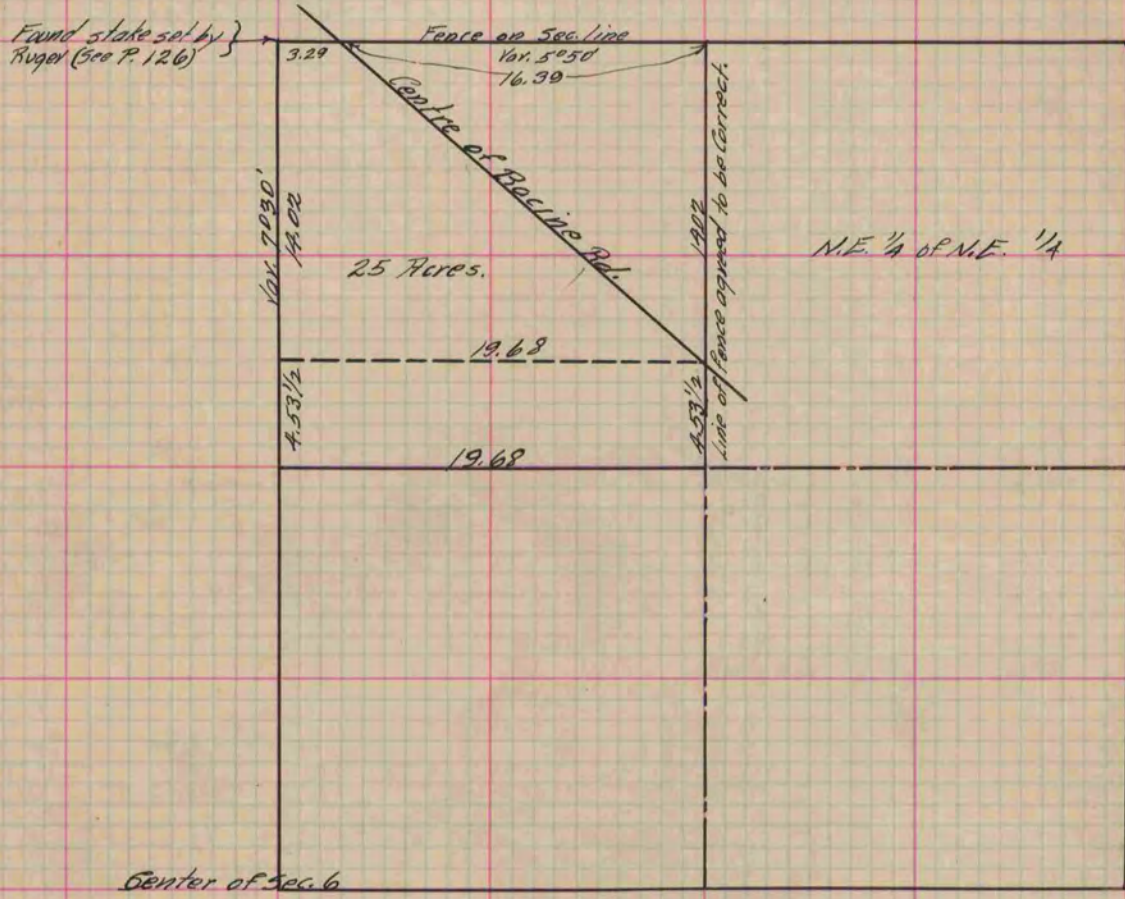
Rock County, Wisconsin, made May the 10th 1869

I hereby certify that the following is a correct record of said survey as made by me.

COUNTY BUILDING
IN CITY OF БЕЛОIT

(Signed) R. B. Lee
RMB

County Surveyor.



Copied from P. 279 Vol. 1 County Surveyor's Record.