

PLAT AND RECORD

341

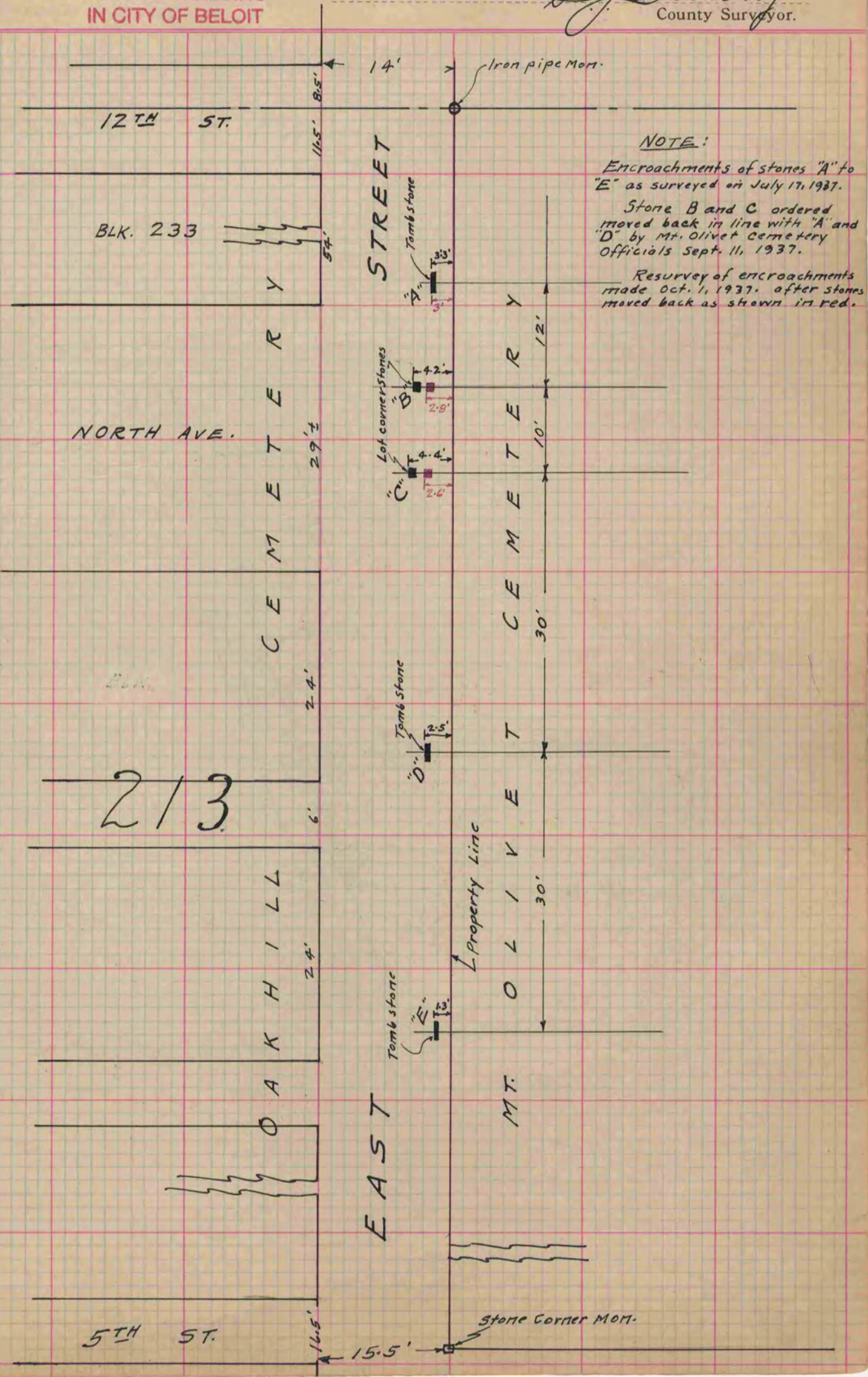
PG 346 JANESVILLE
REC 12/15/75

Of a Survey on Section ^{S.W. 1/4} 23 T 3 N. R 12 E. of the 4 P. M. in Janesville Township
Rock County, Wisconsin, made July the 17, 1937
Oct. the 1, 1937

I hereby certify that the following is a correct record of said survey as made by me.

COUNTY BUILDING
IN CITY OF БЕЛОIT

B. J. Bunney
County Surveyor.



NOTE:
 Encroachments of stones "A" to "E" as surveyed on July 17, 1937.
 Stone B and C ordered moved back in line with "A" and "D" by Mt. Olivet Cemetery Officials Sept. 11, 1937.
 Resurvey of encroachments made Oct. 1, 1937, after stones moved back as shown in red.