

PLAT AND RECORD

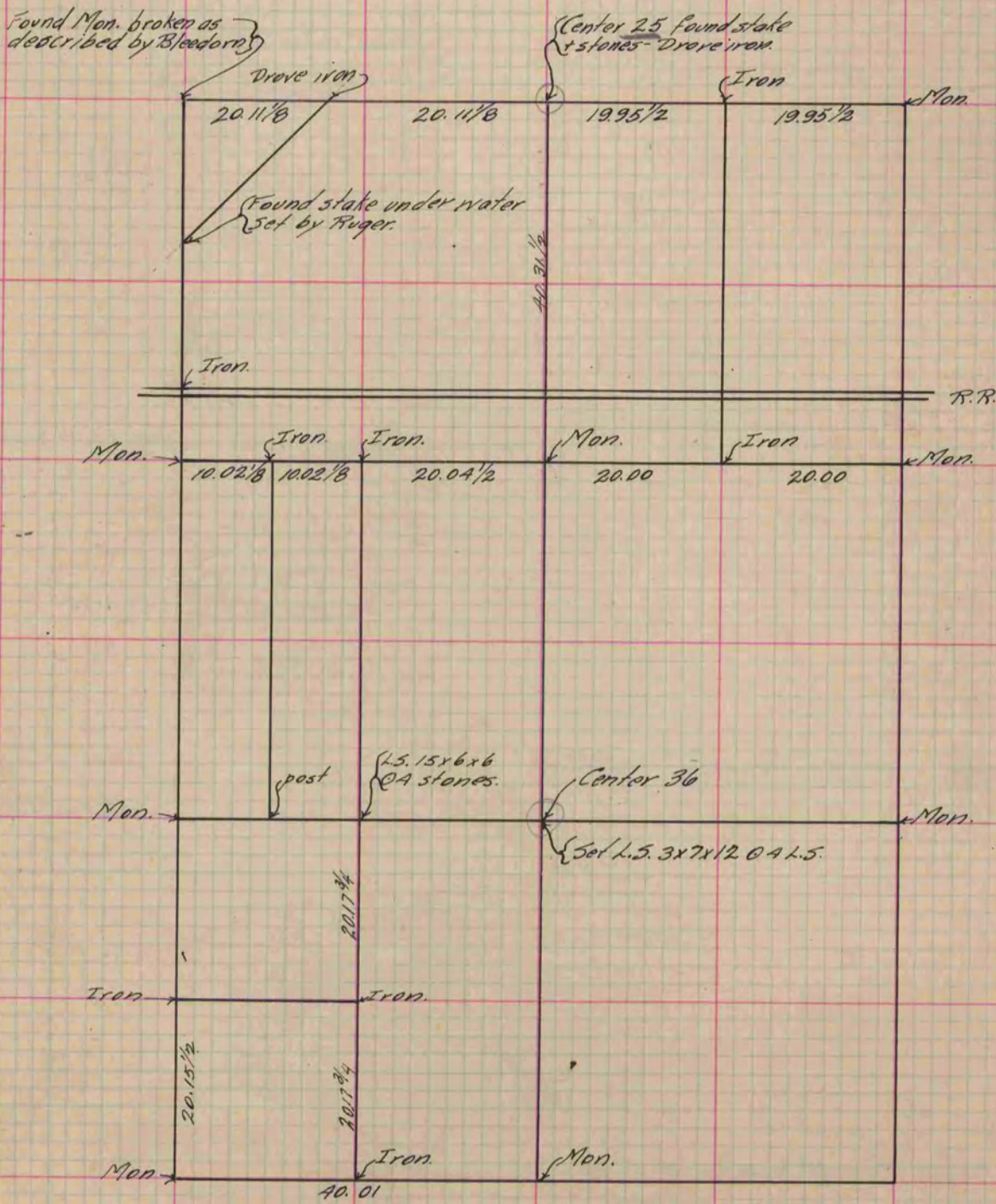
Of a Survey on Sections 25 & 26 T 4 R 13 E. of the 4 P. M. in Milton Township
Rock County, Wisconsin, made June 9 & Aug. the 22 1899

I hereby certify that the following is a correct record of said survey as made by me.

COUNTY BUILDING
IN CITY OF БЕЛОIT

(Signed) Perry F. Brown
P.F.B.

County Surveyor.



Dig 2.3' S. of $\frac{1}{2}$

Copied from P. 386 Vol. 2 County Surveyor's Record.