

PLAT AND RECORD

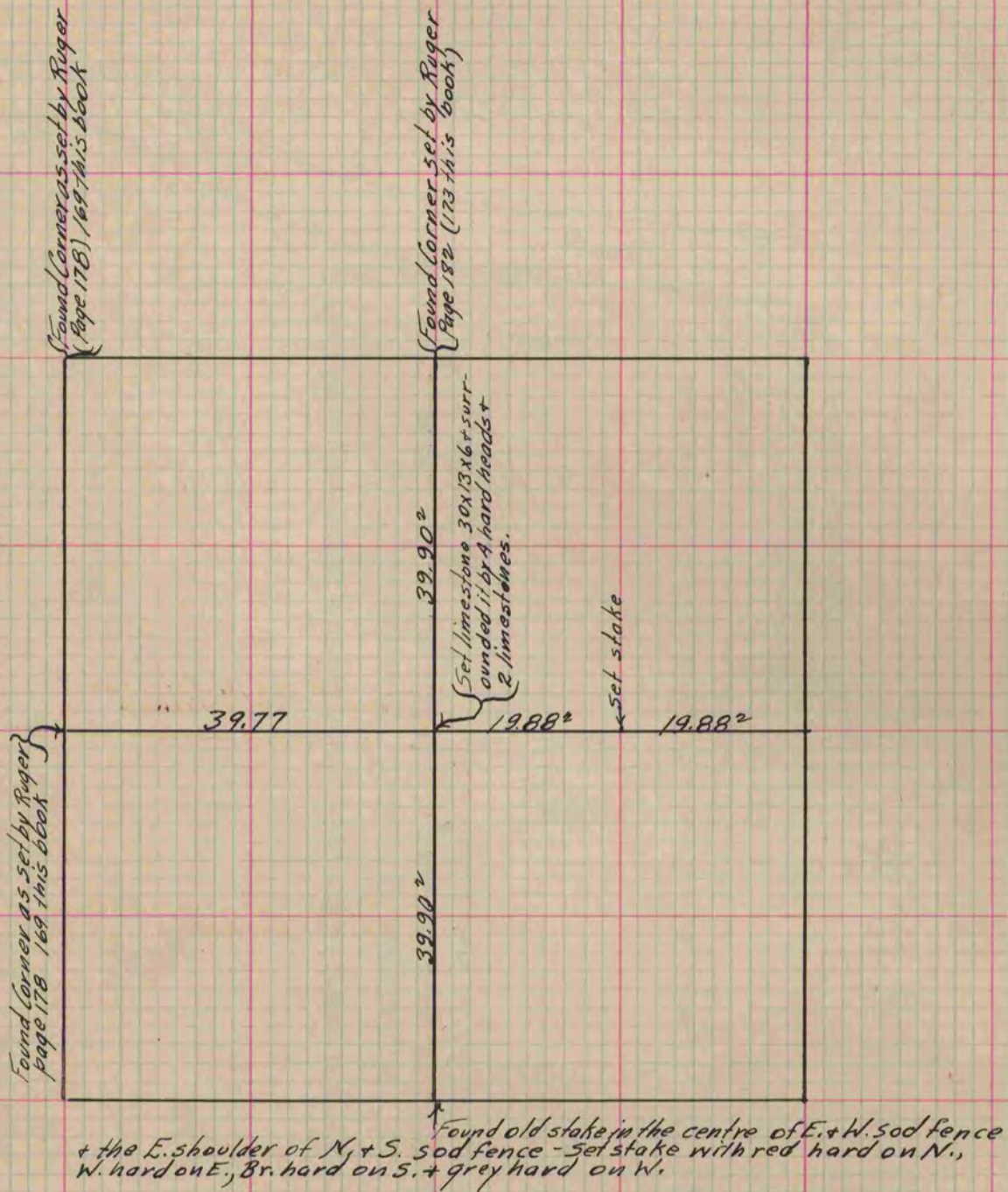
Of a Survey on Section 29 T 3 R 14 E. of the 4 P. M. in Johnstown Township
Rock County, Wisconsin, made October the 13 1865

I hereby certify that the following is a correct record of said survey as made by me.

COUNTY BUILDING
IN CITY OF БЕЛОIT

(Signed) S. D. Locke.
S. D. Locke

County Surveyor.



Copied from Page 224 Vol. 1. Original County Surveyor's Record.