

PLAT AND RECORD

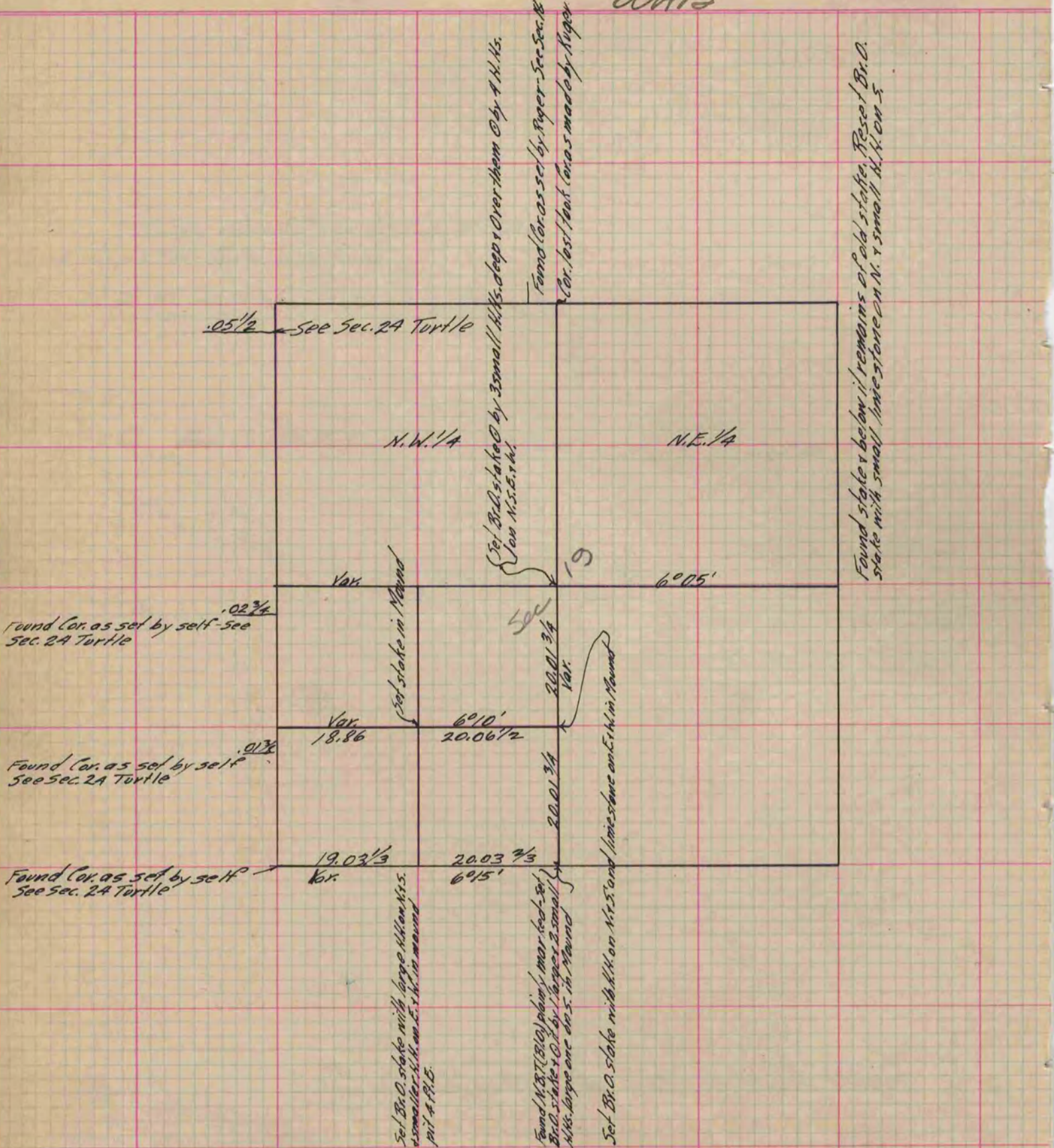
Of a Survey on Section 19 T 1 R 14 E. of the 4 P. M. in Clinton Township
Rock County, Wisconsin, made June the 8 1868

I hereby certify that the following is a correct record of said survey as made by me.

COUNTY BUILDING
IN CITY OF BELOIT

(Signed) S. D. Locke
S.D.L.

County Surveyor.



Copied from P. 268 Vol. 1 County Surveyors Record.