

# PLAT AND RECORD

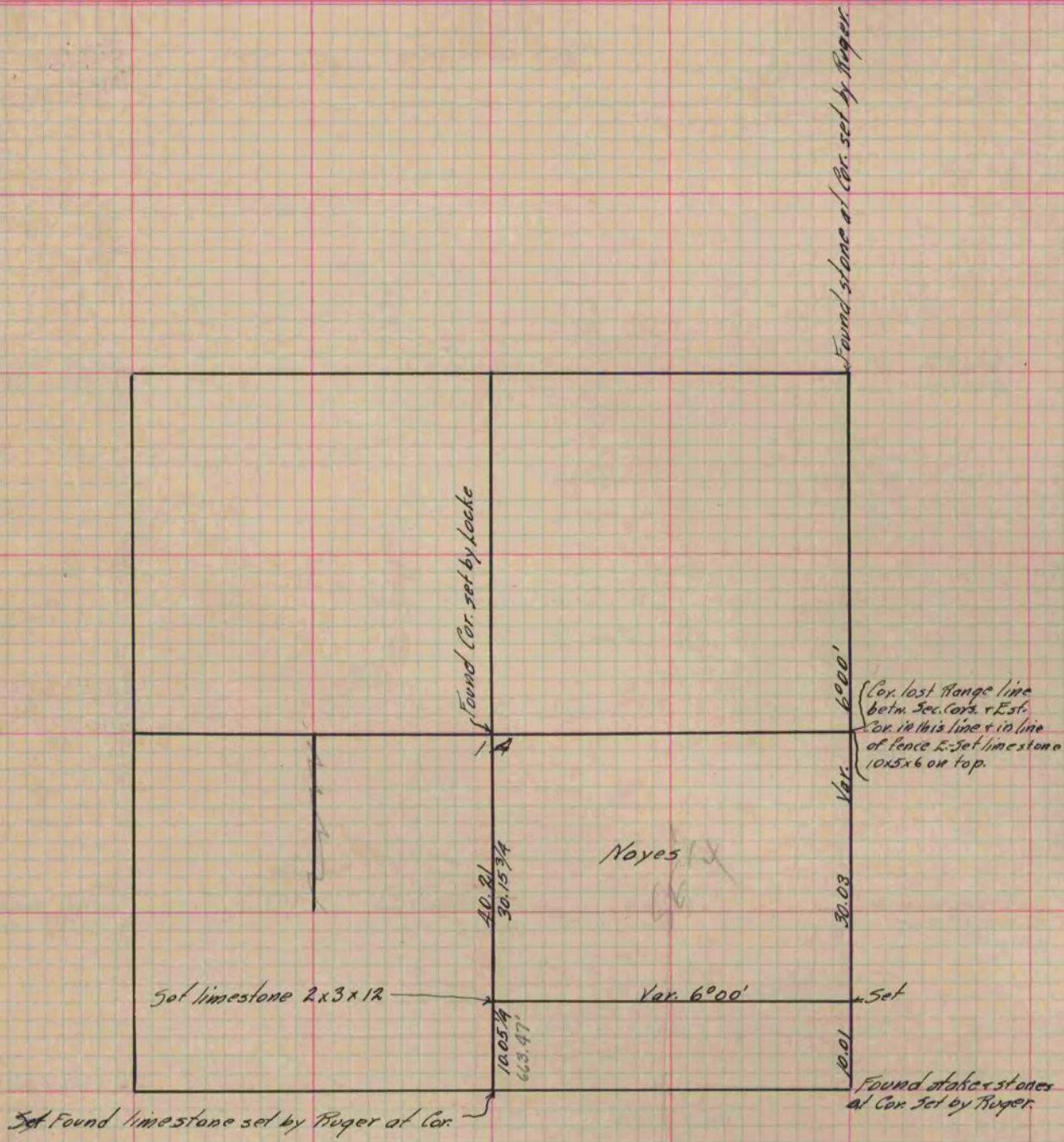
Of a Survey on Section 1A T 2 R 12 E. of the 4 P. M. in Rock Township  
Rock County, Wisconsin, made October the 15<sup>th</sup> 1880

I hereby certify that the following is a correct record of said survey as made by me.

COUNTY BUILDING  
IN CITY OF БЕЛОIT

(Signed) R. K. Lee  
RKL

Dept.  
County Surveyor.



Copied from P. 261 Vol. 2 County Surveyor's Record.