

PLAT AND RECORD

072

Of a Survey on Section 17-18 T. 4N. R. 13 E. of the 4 P. M. in MILTON Township

Rock County, Wisconsin, made 2nd the MAY 1962

I hereby certify that the following is a correct record of said survey as made by me.

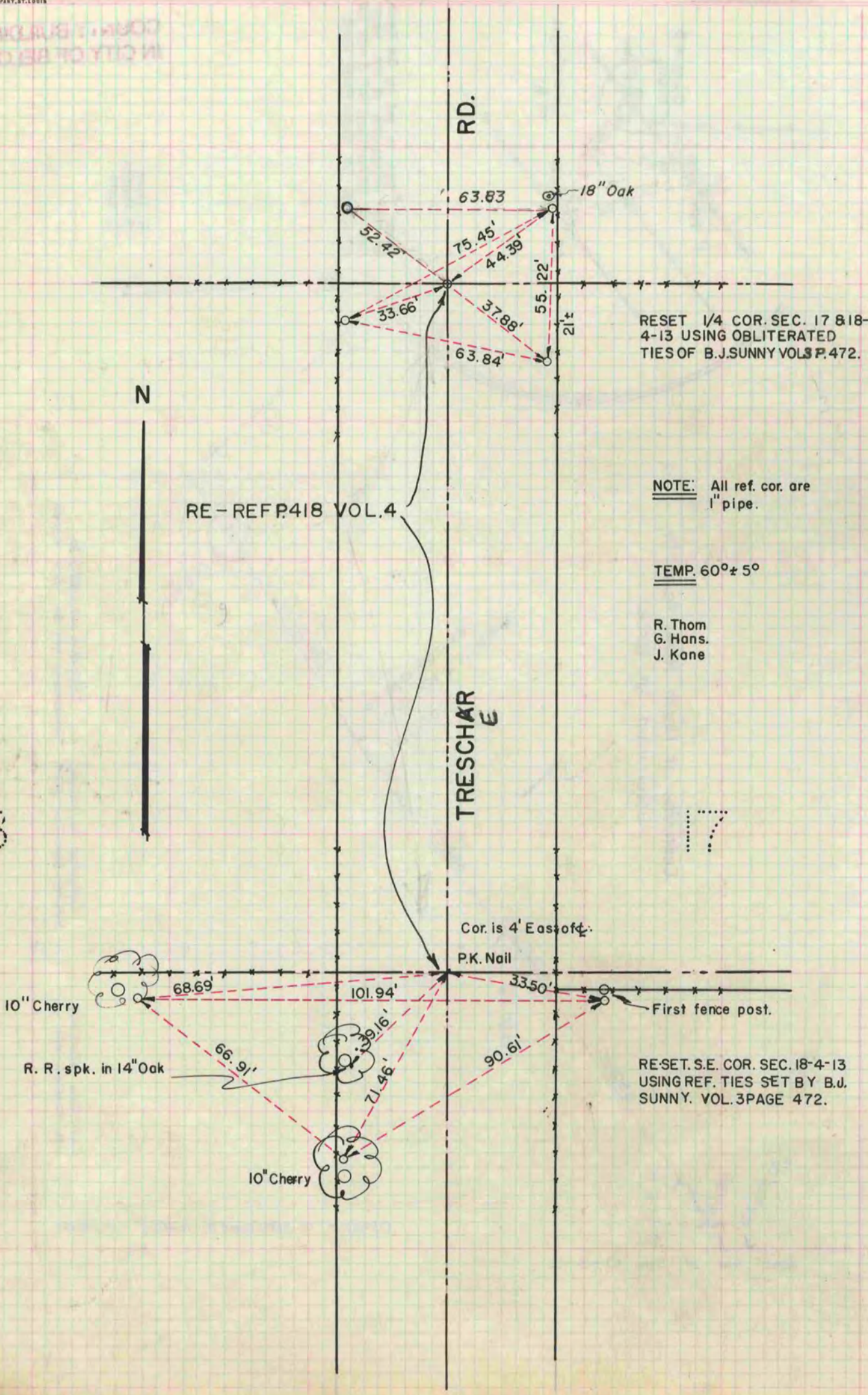
COUNTY BUILDING
IN CITY OF BELOIT

RMB

County Surveyor.

THE GEO. D. BARNARD COMPANY, ST. LOUIS

COUNTY BUILDING
IN CITY OF BELOIT



RE-SET 1/4 COR. SEC. 17 & 18-4-13 USING OBLITERATED TIES OF B.J. SUNNY VOL. 3 P. 472.

NOTE: All ref. cor. are 1" pipe.

TEMP. 60° ± 5°

R. Thom
G. Hans.
J. Kane

RE-REF P. 418 VOL. 4

TRESCHAR E

Cor. is 4' East of P.K. Nail

RE-SET. S.E. COR. SEC. 18-4-13 USING REF. TIES SET BY B.J. SUNNY. VOL. 3 PAGE 472.

10" Cherry

R. R. spk. in 14" Oak

10" Cherry

First fence post.