

PLAT AND RECORD

Of a Survey on Section 22, 23 T 2 R 17 E. of the 4 P. M. in Rock Township

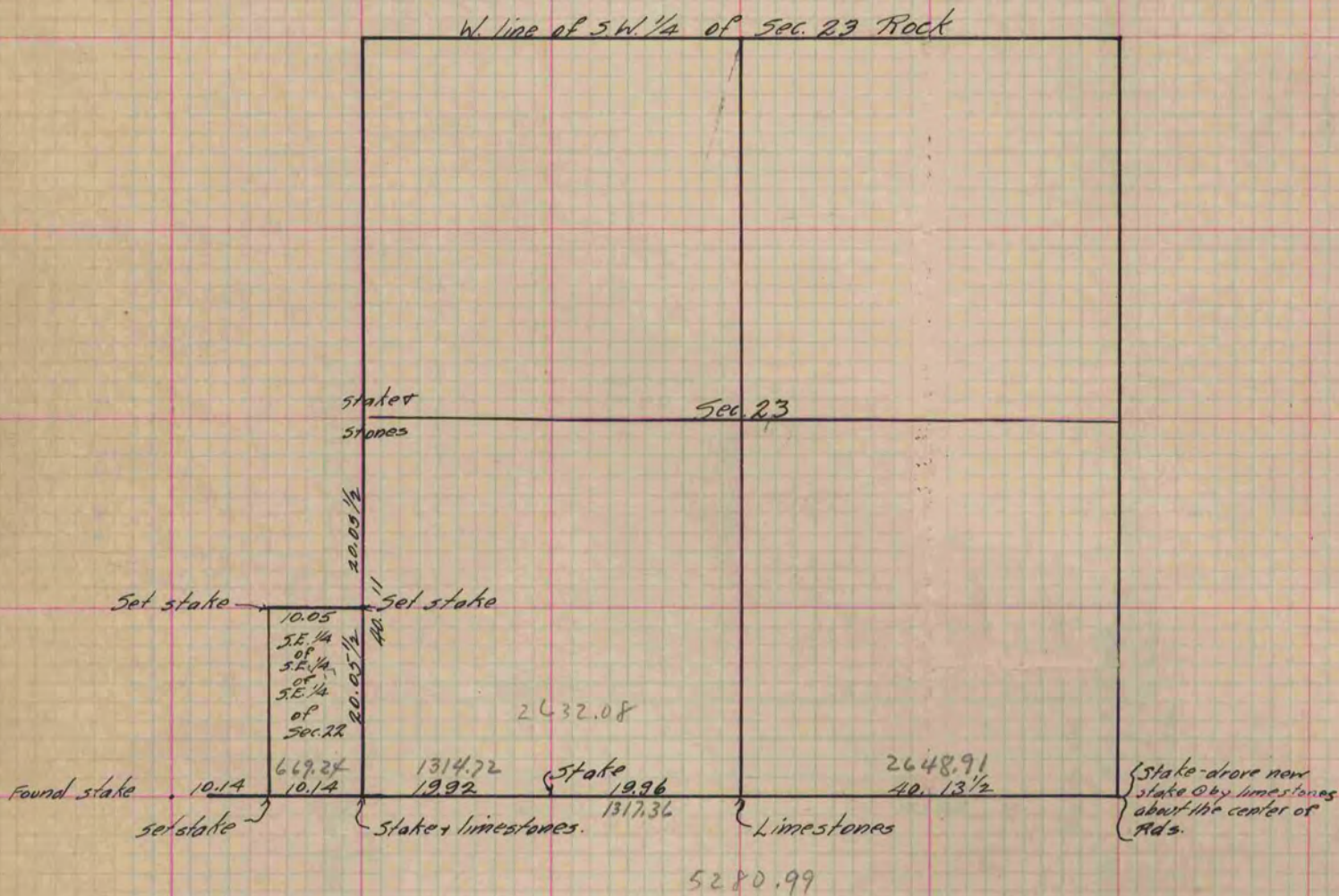
Rock County, Wisconsin, made December the 6 1881

I hereby certify that the following is a correct record of said survey as made by me.

COUNTY BUILDING
IN CITY OF БЕЛОIT

(Signed) S. A. Holmes
S. A. H.

County Surveyor.



Copied from P. 278 Vol. 2 County Surveyor's Record.